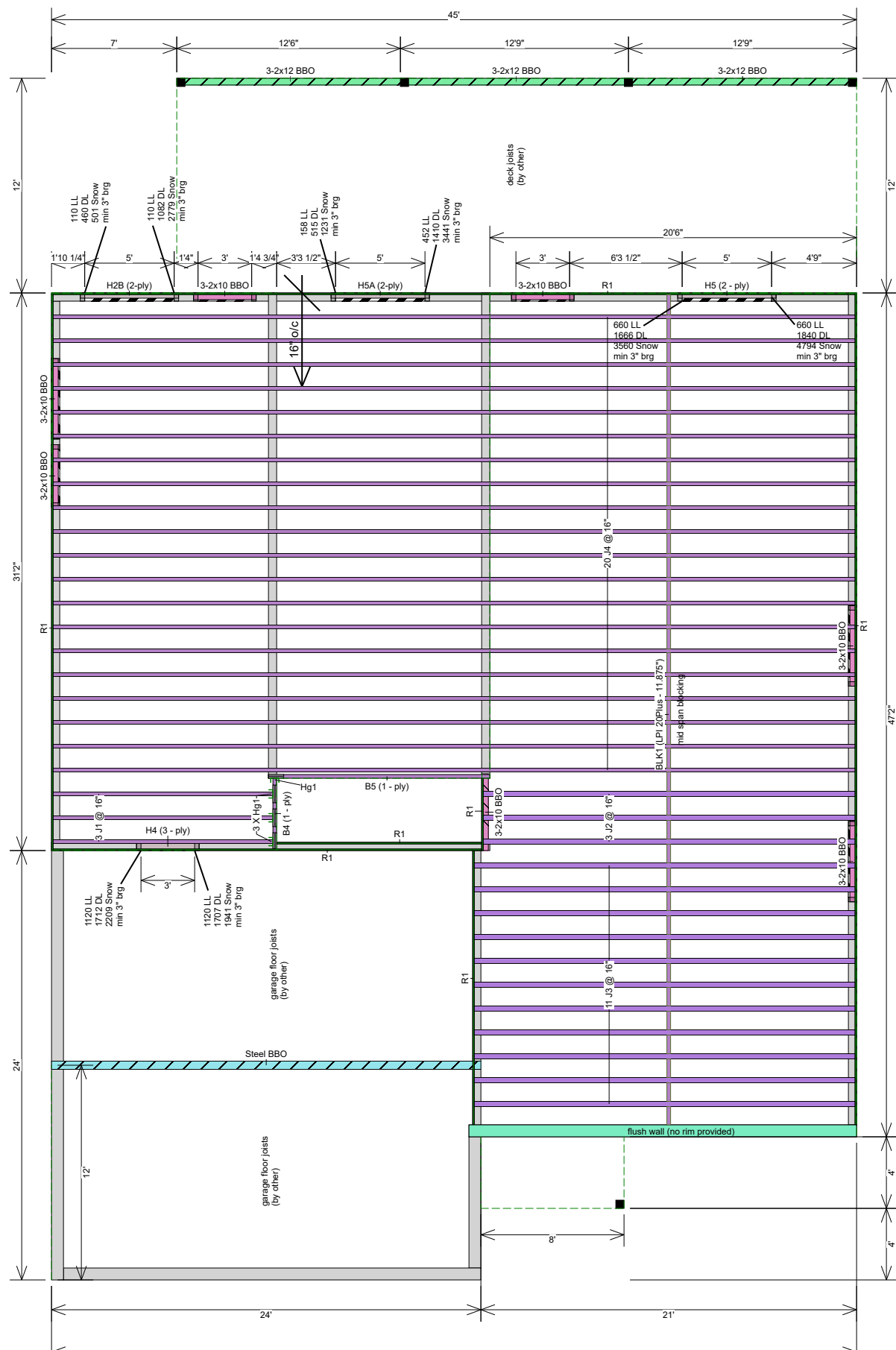


Scale 1/8 inch : 1 ft.



Ground Floor							
I Joist							
Label	Description	Width	Depth	Qty	Plies	Pcs	Length
B5	LPI 20Plus	2.5	11.875			1	13-0-0
B4	LPI 20Plus	2.5	11.875			1	4-0-0
						Total LF:	17'
J4	LPI 20Plus	2.5	11.875			20	45-0-0
J1	LPI 20Plus	2.5	11.875			3	13-0-0
						Total LF:	939'
J3	LPI 42Plus	3.5	11.875			11	22-0-0
J2	LPI 42Plus	3.5	11.875			3	21-0-0
						Total LF:	305'
Blocking							
Label	Description	Width	Depth	Qty	Plies	Pcs	Length
BLK1	LPI 20 Plus	2.5	11.875	LinFt		Varies	39-0-0
Rim Board							
Label	Description	Width	Depth	Qty	Plies	Pcs	Length
R1	LP APA Rated OSB 1.125 X 11.875	1.125	11.875			15	12-0-0
LVL/LSL							
Label	Description	Width	Depth	Qty	Plies	Pcs	Length
H2B (2-ply)	LP-LVL 2900Fb-2.0E	1.75	9.5	1	2	2	6-0-0
H5A (2-ply)	LP-LVL 2900Fb-2.0E	1.75	9.5	1	2	2	6-0-0
H5	LP-LVL 2900Fb-2.0E	1.75	9.5	1	2	2	6-0-0
H4	LP-LVL 2900Fb-2.0E	1.75	9.5	1	3	3	4-0-0
						Total LF:	48'
Hanger							
Label	Pcs	Description	Skew	Slope	Beam/Girder fasteners	Supported Member fasteners	
Hg1	4	LT251188			4 10dx1 1/2	2 10dx1 1/2	

Important Notes

Review Manufacturers' installation guide for additional structural details where necessary. Review all beam and header spec drawings for bearing requirements prior to framing.

Do Not cut or notch top or bottom flanges of joists to provide clearance for plumbing fixtures. Offset and/or install additional joists to provide clearance.

All Steel beams and columns by others. All dimensional stock (SPF and DF) Joists, Beams, Headers and Columns are by others, If listed on this layout, it is for informational purposes only. Refer to QUOTE or INVOICE for exact quantities of materials that are included.

Legend	
	Wall
	Wall Opening
	LP APA Rated OSB 1.125 X 11.875
	LPI 20Plus 11.875
	LPI 42Plus 11.875
	LP-LVL 2900Fb-2.0E 1.75 X 9.5 (Dropped)
	4.5 X 9.25 (Dropped)
	4.5 X 11.25 (Dropped)
	5.5 X 12 (Dropped)
	8 X 11.875



Salmon Arm Truss Systems LTD
5231 46th Ave SE
Salmon Arm, BC
CA
V1E 1X2
250 832 8238

Description
Layout Name
42148-F

Shipping
1181 - 17th Ave S.E.
Salmon Arm

Created
May 15, 2020

Plotted
May 27, 2020

Designer
Andy Andreasen

Project
Wood Creek (Lot#34)

This drawing is a general interpretation of the construction drawings for this project and assumes the adequacy of the supporting structure. It is intended only as a general guide for the engineered wood products placement. All Dimensions, quantities and details must be carefully checked, verified by comparison to the actual field conditions and are the responsibility of the client, architect/engineer and builder. Engineered floor system does not account for roof loading unless noted otherwise.

REVIEWED & APPROVED BY:

Pfil Cates May 21 2020

Ground Floor	
Design Method	LSD (Canada)
Building Code	NBCC 2015 / BCBC 2018
Floor	
Loads	
Live	40
Dead	12
Deflection Joist	
LL Span L/	480
TL Span L/	240
LL Cant 2L/	480
TL Cant 2L/	240
Deflection Girder	
LL Span L/	480
TL Span L/	240
LL Cant 2L/	480
TL Cant 2L/	240
Decking	
Decking	SPF Plywood
Thickness	3/4"
Fastener	Nailed & Glued
Vibration	
Ceiling:	Gypsum 1/2"