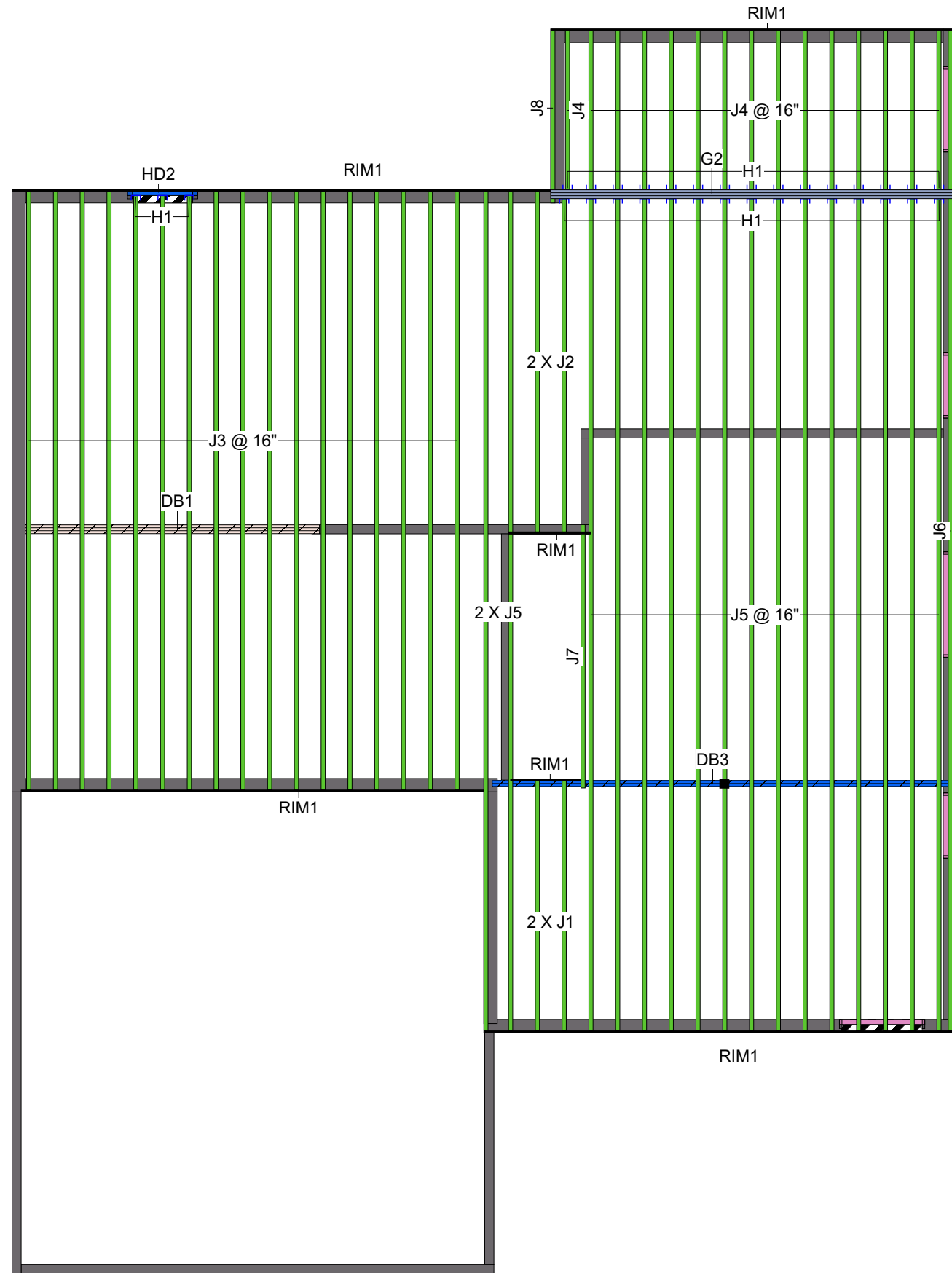


Main Floor



| Label | Description | Width | Depth | Qty | Plies | Pcs | Length |
|-------------------------|---------------------------------|-------------|--------|-------|-----------------------|----------------------------|--------|
| Main Floor Joist | | | | | | | |
| J1 | LPI 20Plus | 2.5 | 11.875 | | | 2 | 13-0-0 |
| J2 | LPI 20Plus | 2.5 | 11.875 | | | 2 | 17-0-0 |
| J3 | LPI 20Plus | 2.5 | 11.875 | | | 17 | 30-0-0 |
| J4 | LPI 20Plus | 2.5 | 11.875 | | | 15 | 8-0-0 |
| J5 | LPI 20Plus | 2.5 | 11.875 | | | 16 | 42-0-0 |
| J6 | LPI 20Plus | 2.5 | 11.875 | | | 1 | 50-0-0 |
| J7 | LPI 20Plus | 2.5 | 11.875 | | | 1 | 14-0-0 |
| J8 | LPI 20Plus | 2.5 | 11.875 | | | 1 | 9-0-0 |
| LVL/LSL | | | | | | | |
| Label | Description | Width | Depth | Qty | Plies | Pcs | Length |
| DB3 | LP-LVL 2900Fb-2.0E | 1.75 | 11.875 | 1 | 2 | 2 | 23-0-0 |
| HD2 | LP-LVL 2900Fb-2.0E | 1.75 | 11.875 | 1 | 2 | 2 | 4-0-0 |
| DB1 | LP-LVL 2900Fb-2.0E | 1.75 | 14 | 1 | 3 | 3 | 16-0-0 |
| G2 | LP-LVL 3100Fb-2.2E | 1.75 | 18.75 | 1 | 3 | 3 | 20-0-0 |
| Rim Board | | | | | | | |
| Label | Description | Width | Depth | Qty | Plies | Pcs | Length |
| RIM1 | LP APA Rated OSB 1.125 X 11.875 | 1.125 | 11.875 | | | 10 | 12-0-0 |
| Hanger | | | | | | | |
| Label | Pcs | Description | Skew | Slope | Beam/Girder fasteners | Supported Member fasteners | |
| H1 | 33 | THFI25118 | | | 10 10d | | |

| Legend | |
|--------|--|
| | Load from Above |
| | 2x6Extlb |
| | Wall Opening |
| | LP APA Rated OSB 1.125 X 11.875 |
| | LPI 20Plus 11.875 |
| | LP-LVL 2900Fb-2.0E 1.75 X 11.875 |
| | LP-LVL 2900Fb-2.0E 1.75 X 11.875 (Dropped) |
| | LP-LVL 2900Fb-2.0E 1.75 X 14 (Dropped) |
| | LP-LVL 3100Fb-2.2E 1.75 X 18.75 |
| | 1.5 X 9.25 (Dropped) |

Multi-Ply Fastening

Main Floor

HD5-E, HD3-D, HD5-D, HD3-C, HD3-B, DB3-A

Fasten all plies using 2 rows of Pneumatic Gun Nail (.120x3.25") at 12" o.c.

HD2-A

Fasten all plies using 5 rows of Pneumatic Gun Nail (.120x3.25") at 12" o.c.

DB1-A

Fasten all plies using 3 rows of Pneumatic Gun Nail (.120x3.25") at 12" o.c.

G2-A

Fasten all plies using 3 rows of Pneumatic Gun Nail (.120x3.25") at 12" o.c. except for regions covered by concentrated load fastening.

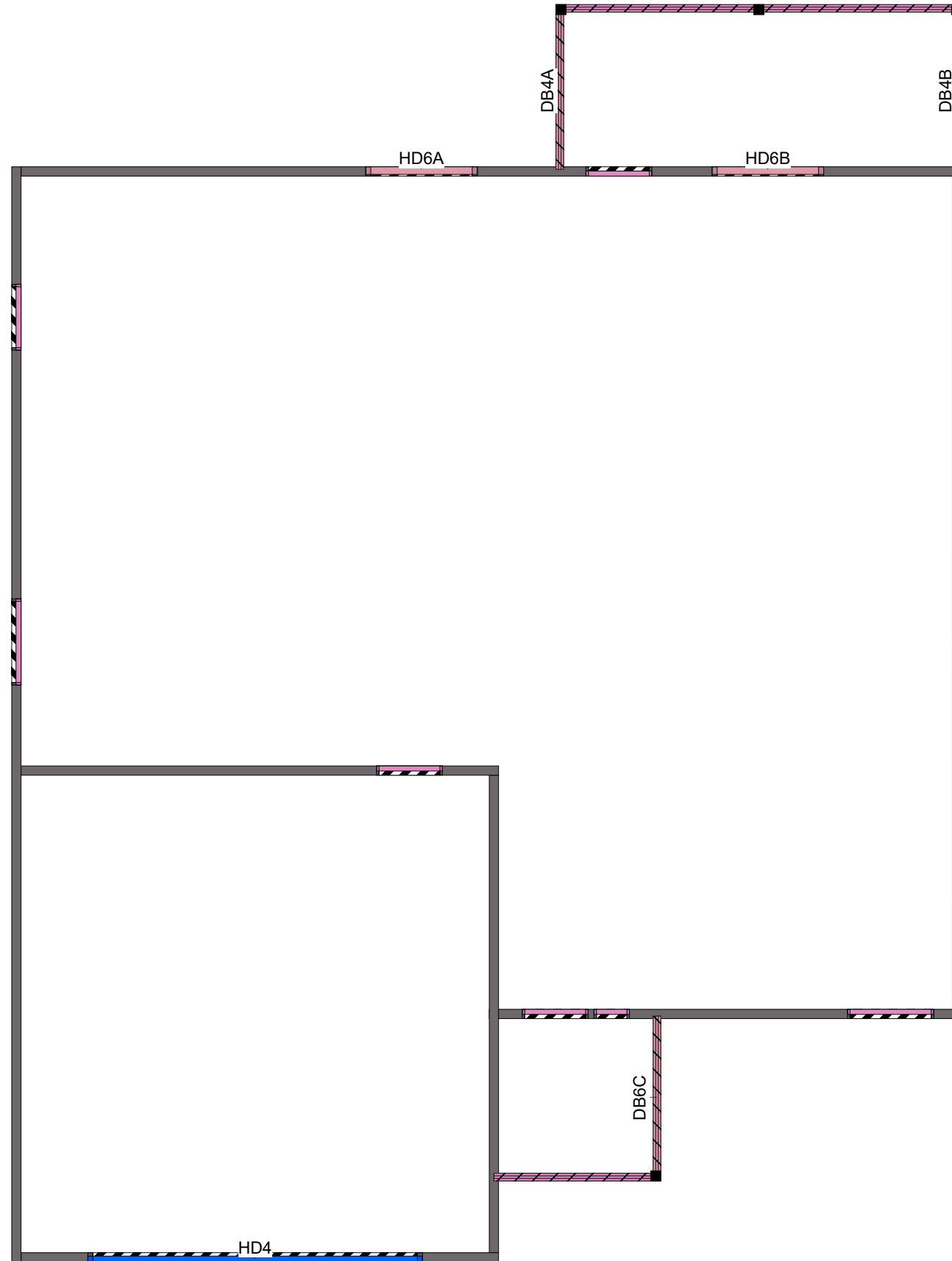
Fasten at concentrated side load each side of concentrated load at 2-0-0 with 1 column 3 rows of Pneumatic Gun Nail (.120x3.25")



| | |
|---------------------------|---|
| Layout Name | 200656F |
| Design Method | LSD |
| Description | |
| Created | March 09, 2020 |
| Builder | Wood Creek Construction |
| Sales Rep | LS |
| Designer | Lucas Simpson |
| Shipping | Lot 13, 81 15 ave Se, Salmon Arm, BC |
| Project | 200656F |
| Builder's Project | Residence |
| Kamloops Truss Ltd | 464 Chilcotin Road Kamloops BC., B.C. Canada V2H 1G3 250-374-3330 |

| | |
|--------------------------|-----------------------|
| Main Floor | |
| Design Method | LSD (Canada) |
| Building Code | NBCC 2015 / BCBC 2018 |
| Floor | |
| Loads | |
| Live | 40 |
| Dead | 15 |
| Deflection Joist | |
| LL Span L/ | 360 |
| TL Span L/ | 240 |
| LL Cant 2L/ | 360 |
| TL Cant 2L/ | 240 |
| Deflection Girder | |
| LL Span L/ | 360 |
| TL Span L/ | 240 |
| LL Cant 2L/ | 360 |
| TL Cant 2L/ | 240 |
| Decking | |
| Decking | D. Fir Plywood |
| Thickness | 3/4" |
| Fastener | Nailed & Glued |

Roof Level



| Roof Level | | | | | | | |
|------------|--------------------|-------|--------|-----|-------|-----|--------|
| LVL/LSL | | | | | | | |
| Label | Description | Width | Depth | Qty | Plies | Pcs | Length |
| HD4 | LP-LVL 2900Fb-2.0E | 1.75 | 11.875 | 1 | 2 | 2 | 17-0-0 |
| Lumber | | | | | | | |
| Label | Description | Width | Depth | Qty | Plies | Pcs | Length |
| DB4B | S-P-F #2 | 1.5 | 9.25 | 1 | 3 | 3 | 8-0-0 |
| DB4A | S-P-F #2 | 1.5 | 9.25 | 1 | 3 | 3 | 8-0-0 |
| DB6C | S-P-F #2 | 1.5 | 9.25 | 1 | 3 | 3 | 8-0-0 |
| HD6A | S-P-F #2 | 1.5 | 9.25 | 1 | 3 | 3 | 6-0-0 |
| HD6B | S-P-F #2 | 1.5 | 9.25 | 1 | 3 | 3 | 6-0-0 |

| Legend | |
|--------|--|
| | Load from Above |
| | 2x6Extlb |
| | Wall Opening |
| | LP-LVL 2900Fb-2.0E 1.75 X 11.875 (Dropped) |
| | S-P-F #2 1.5 X 9.25 (Dropped) |
| | 1.5 X 9.25 (Dropped) |

Multi-Ply Fastening

Roof Level



HD6A, HD6B, HD5-A, HD3-A, HD1-A, HD5-C, HD4-A, HD5-B, DB5-B, DB4B, DB4A, DB5-A, DB6C
 Fasten all plies using 2 rows of Pneumatic Gun Nail (.120x3.25") at 12" o.c.



| | |
|---------------------------|---|
| Layout Name | 200656F |
| Design Method | LSD |
| Description | |
| Created | March 09, 2020 |
| Builder | Wood Creek Construction |
| Sales Rep | LS |
| Designer | Lucais Simpson |
| Shipping | Lot 13, 81 15 ave Se, Salmon Arm, BC |
| Project | 200656F |
| Builder's Project | Residence |
| Kamloops Truss Ltd | 464 Chilcotin Road Kamloops BC., B.C. Canada V2H 1G3 250-374-3330 |

| Roof Level | |
|--------------------------|-----------------------|
| Design Method | LSD (Canada) |
| Building Code | NBCC 2015 / BCBC 2018 |
| Floor | |
| Loads | |
| Live | 40 |
| Dead | 15 |
| Deflection Joist | |
| LL Span L/ | 360 |
| TL Span L/ | 240 |
| LL Cant 2L/ | 360 |
| TL Cant 2L/ | 240 |
| Deflection Girder | |
| LL Span L/ | 360 |
| TL Span L/ | 240 |
| LL Cant 2L/ | 360 |
| TL Cant 2L/ | 240 |