



PUBLIC WORKS, UTILITIES & PARKS
100-30 STREET SE
PO BOX 40 SALMON ARM, BC V1E 4N2
Phone: 250-803-4080 FAX 250-803-4092

EMAIL NOTICE

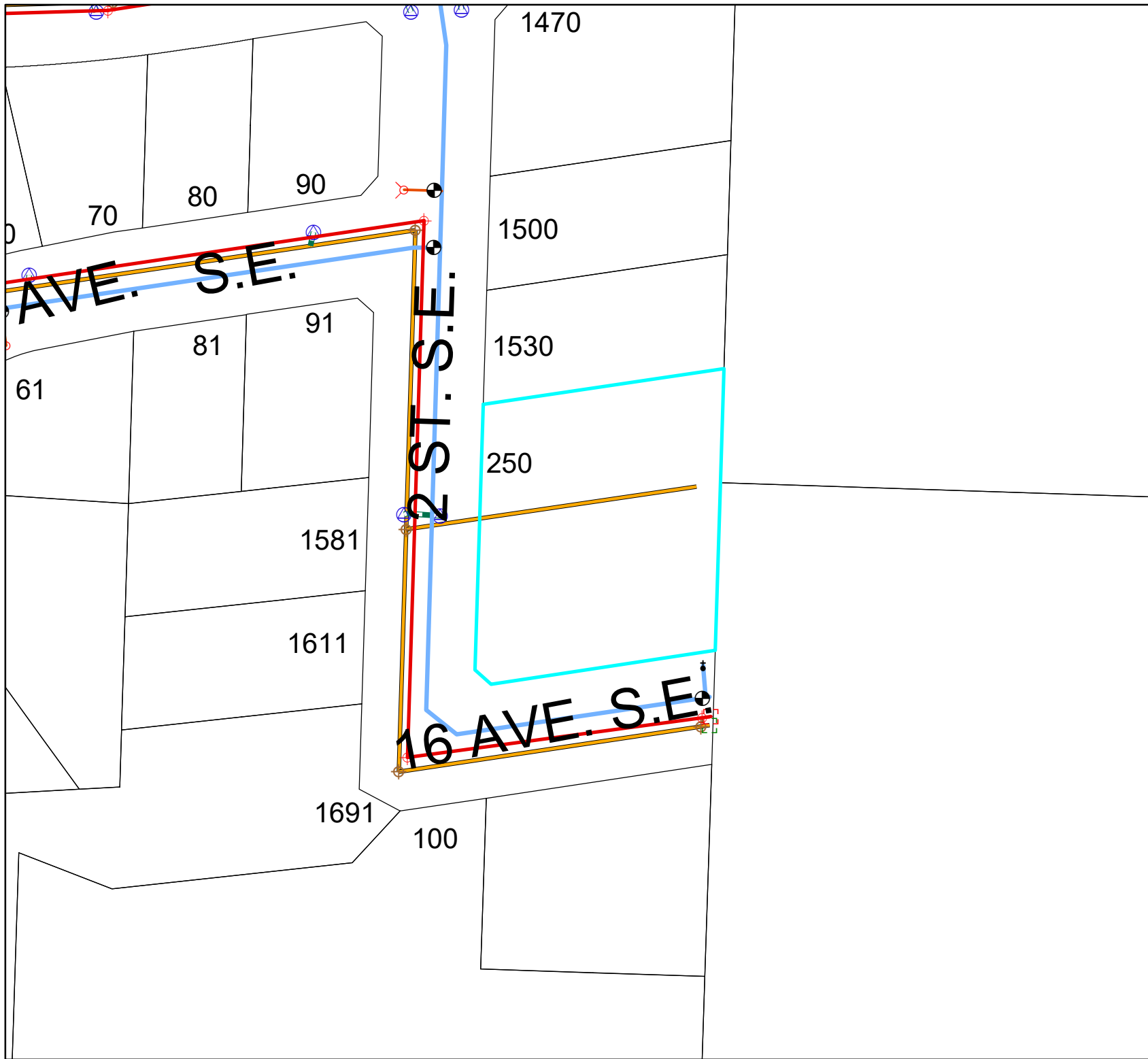
To: marc@woodcreek.ca
Company: Wood Creek Construction Ltd
Of Pages: 2 (Including this one)
FROM: Salmon Arm Public Works/Utilities/Parks Department

MESSAGE: NO MUNICIPAL LOCATES

BYDP TICKET: 20212114133

SERVICE LOCATION REQUEST: 1550 2 STREET SE

THIS MESSAGE IS INTENDED ONLY FOR THE USE OF THE ADDRESSEE AND MIGHT CONTAIN INFORMATION THAT IS PRIVILEGED, CONFIDENTIAL, AND EXEMPT FROM DISCLOSURE. If the reader of this message is not the intended recipient or an employee of the agent responsible for delivering the message to the intended recipient, you are hereby notified that any dissemination, distribution, or copying of the communication is strictly prohibited. If you have received this communication in error, please notify us immediately by telephone and return the original message to us by mail. Thank you.



Legend

- Street_Lights by fixture**
LED, F_FIXTURE
- LED
 - Residential
 - Ornamental
 - Ornamental Davit
 - Wharf Light
 - Parking Lot Lights
 - Davit
 - Hydro Davit
 - Field Lights
 - Not Installed
 - Other
 - TCH
 - End Cap
 - Unknown Valve
 - Butterfly Valve
 - Gate Valve
 - Manhole
 - DROP Manhole
- Sani_Mains**
Pipes
- Force Main
 - Gravity Main
 - Air Release
 - Blow Off
 - Butterfly
 - Check
 - Curb Stop
 - Drain
 - Gate
 - Normally Closed
 - Pressure Reducing
 - Water Hydrant
 - Water Hydrant Lead
 - <all other values>
 - Water Pressure Zone 1
 - Water Pressure Zone 2
 - Water Pressure Zone 3
 - Water Pressure Zone 3A
 - Water Pressure Zone 4
 - Water Pressure Zone 5
 - Storm End Cap
 - Storm Manhole
 - Storm Catch Basin
 - Catchbasin Lead
 - Gravity
 - Perforated Drain
 - Parcels

