

ICF WALL SCHEDULE

| | |
|-----|--|
| FW1 | 8" ICF FOUNDATION WALL - (2) 15M CONTINUOUS STRIP BARS - 15M VERTICAL BARS @ 16" OC - 15M FOOTING DOWELS @ 16" OC - ALTERNATING HOOKS + MIN 24" PROJECTION PAST TOP OF FOOTING - ALL WALL STEEL PLACED IN CENTER OF WALL - ADD CORNER BARS WHERE INDICATED ON PLAN - 20" WIDE x 8" DEEP CONCRETE STRIP FOOTING - (3) 15M CONTINUOUS BARS |
| FW2 | 6" FOUNDATION WALL - (2) 15M CONTINUOUS TOP BARS - 15M HORIZONTAL BARS @ 16" OC - 15M VERTICAL BARS @ 16" OC - 15M FOOTING DOWELS @ 16" OC - 15M CORNER HOOKS + MIN 24" PROJECTION PAST TOP OF FOOTING - ALL WALL STEEL PLACED IN CENTER OF WALL - ADD CORNER BARS WHERE INDICATED ON PLAN - 44" WIDE x 8" DEEP CONCRETE STRIP FOOTING - 15M BARS @ 16" OC EACHWAY, CHAINED 3" CLEAR OF GRADE |
| FW3 | PART 3 IFC FOUNDATION WALL + STRIP FOOTING - NOT IN WILLETON ENGINEERING'S DESIGN SCOPE |

CONCRETE STRIP FOOTING SCHEDULE

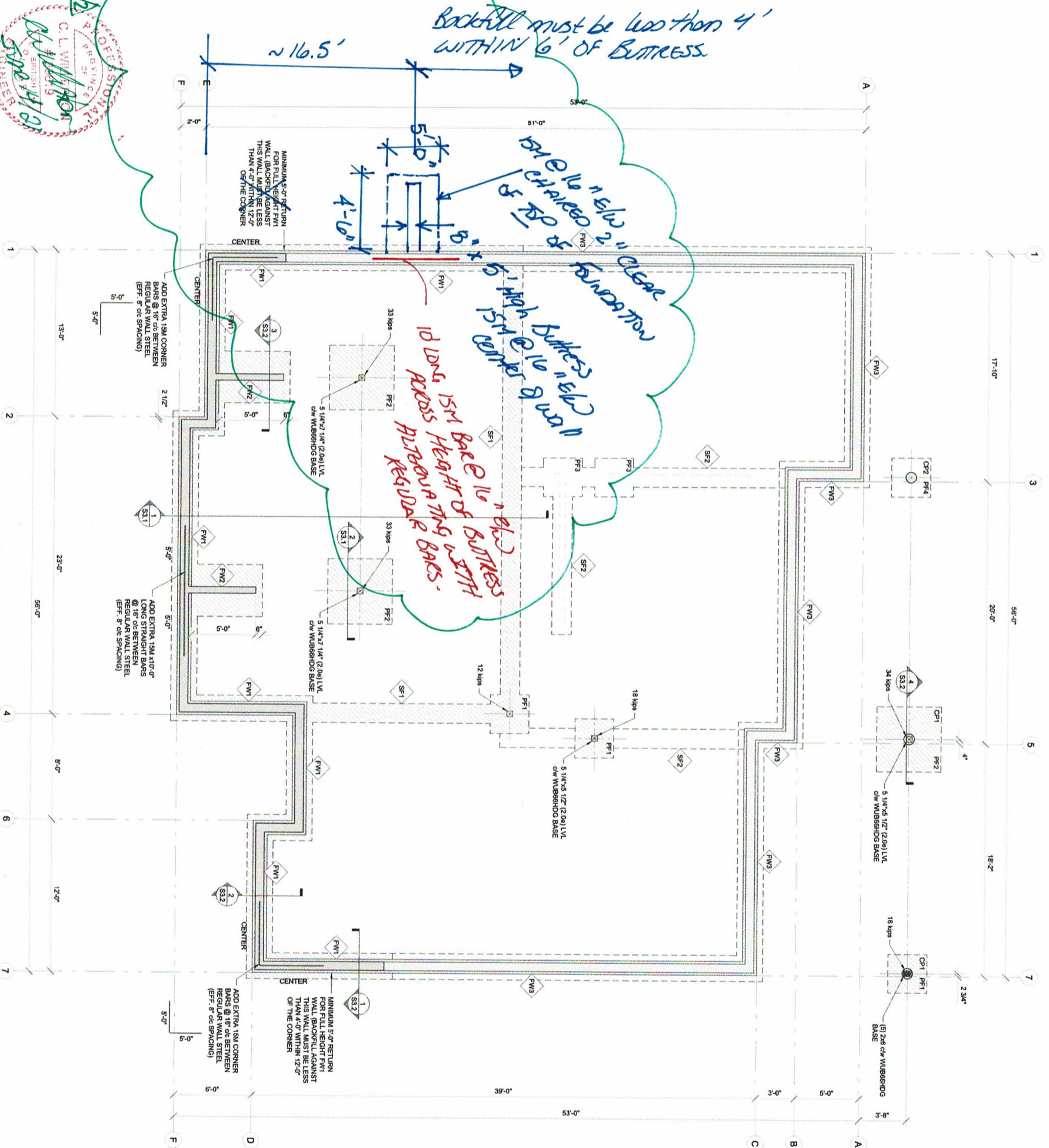
| | |
|-----|---|
| SF1 | 24" WIDE x 8" DEEP CONCRETE STRIP FOOTING - (3) 15M CONTINUOUS BARS - 10M LATERAL BARS @ 16" OC |
| SF2 | PART 3 INTERIOR STRIP FOOTING - NOT IN WILLETON ENGINEERING'S DESIGN SCOPE |

CONCRETE PAD FOOTING SCHEDULE

| | |
|-----|---|
| PF1 | 3'-0" x 3'-0" THICK CONCRETE PAD FOOTING 4" (4) 15M BARS EACHWAY, CHAINED 3" CLEAR OF GRADE |
| PF2 | 5'-0" x 5'-0" THICK CONCRETE PAD FOOTING 4" (8) 15M BARS EACHWAY, CHAINED 3" CLEAR OF GRADE |
| PF3 | PART 3 PAD FOOTING - NOT IN WILLETON ENGINEERING'S DESIGN SCOPE |

CONCRETE PEDESTAL SCHEDULE

| | |
|-----|---|
| CP1 | 10" (8) CONCRETE SCHEDULE OR 10" (10" SQUARE PEDESTAL 4" (4) 15M CLOSED-TIE STRIPBARS @ 8" (8) UNDER FOOTING BARS |
| CP2 | PART 3 PEDESTAL - NOT IN WILLETON ENGINEERING'S DESIGN SCOPE |



1 PARTIAL FOUNDATION PLAN
SCALE: 1/4"=1'-0"

POINT LOADS OVER 10,000 LBS ARE INDICATED ON PLAN AND ARE UNFACTORED.