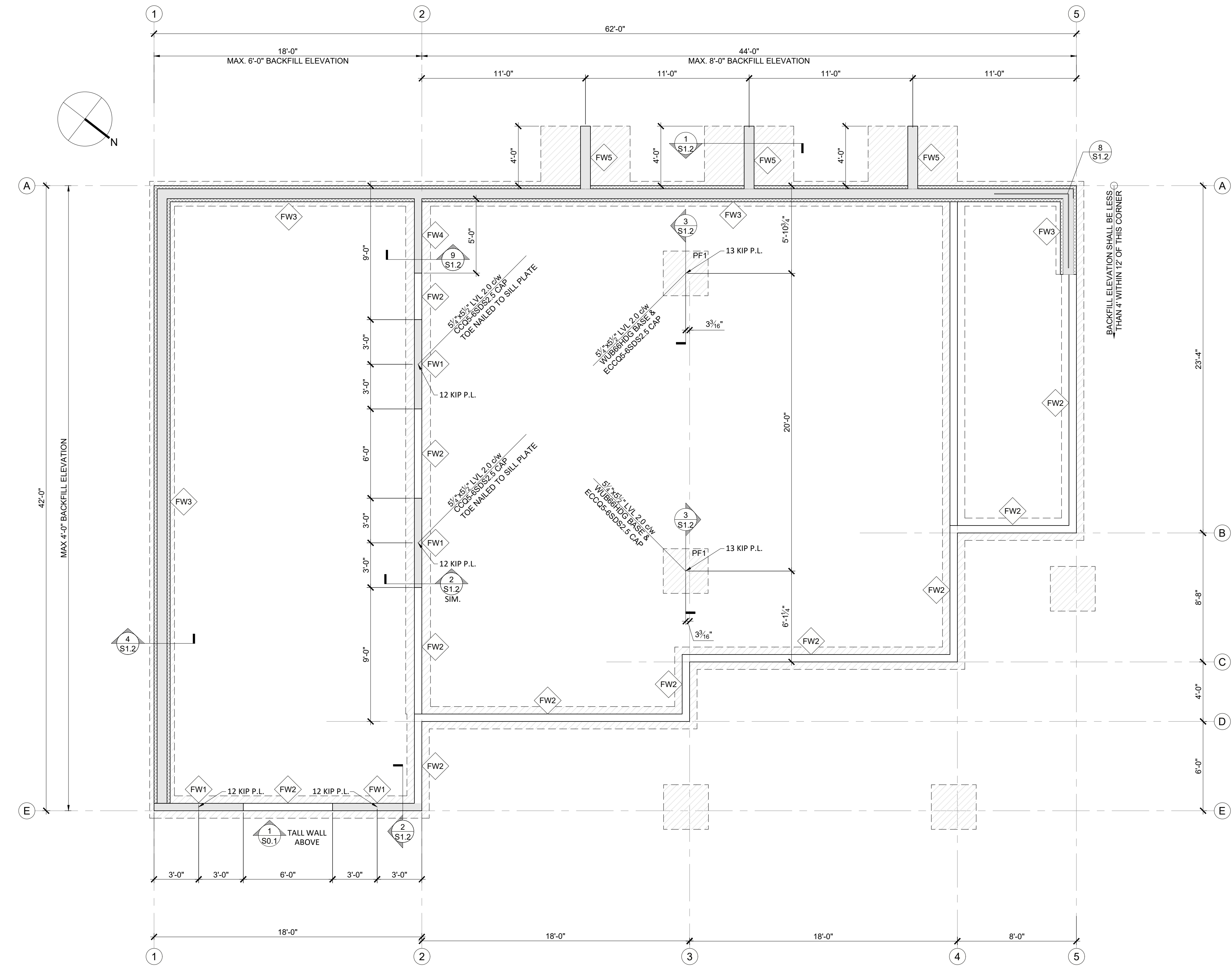


FOUNDATION WALL SCHEDULE

FW1	6" FOUNDATION WALL - (2) 15M CONTINUOUS TOP BARS - 15M HORIZONTAL BARS @ 16" c/c - 15M VERTICAL BARS @ 16" c/c - 15M FOOTING DOWELS @ 16" c/c c/w - ALTERNATING HOOKS + MIN 24" PROJECTION PAST TOP OF FOOTING - ALL WALL STEEL PLACED IN CENTER OF WALL - ADD CORNER BARS WHERE INDICATED ON PLAN 20" WIDE x 8" DEEP CONCRETE STRIP FOOTING - (2) 15M CONTINUOUS BARS
FW2	PART 9 BCBC FOUNDATION WALL
FW3	8" FOUNDATION WALL (AMVIC ICF BLOCK) - (2) 15M CONTINUOUS TOP BARS - 15M HORIZONTAL BARS @ 16" c/c - 15M VERTICAL BARS @ 16" c/c - 15M FOOTING DOWELS @ 16" c/c c/w - ALTERNATING HOOKS + MIN 24" PROJECTION PAST TOP OF FOOTING - ALL WALL STEEL PLACED IN CENTER OF WALL - ADD CORNER BARS WHERE INDICATED ON PLAN 20" WIDE x 8" DEEP CONCRETE STRIP FOOTING - (2) 15M CONTINUOUS BARS
FW4	6" WIDE CONCRETE BUTTRESS WALL - (2) 15M CONT TOP BARS - 15M HORIZONTAL BARS @ 16" c/c - 15M VERTICAL BARS @ 16" c/c c/w 8" LONG ALTERNATING HOOKS UNDER FOOTING BARS + MIN 24" PROJECTION PAST TOP OF FOOTING - ALL WALL STEEL PLACED IN CENTER OF WALL 20" WIDE x 8" DEEP CONCRETE STRIP FOOTING - (2) 15M CONTINUOUS BARS
FW5	8" WIDE CONCRETE BUTTRESS WALL - (2) 15M CONT TOP BARS - 15M HORIZONTAL BARS @ 16" c/c - 15M VERTICAL BARS @ 16" c/c c/w 8" LONG ALTERNATING HOOKS UNDER FOOTING BARS + MIN 24" PROJECTION PAST TOP OF FOOTING - ALL WALL STEEL PLACED IN CENTER OF WALL 72" WIDE x 8" DEEP CONCRETE STRIP FOOTING - 15M @ 16" c/c EACH WAY CHAIRED 2" CLEAR TOP OF FOOTING

PAD FOOTING SCHEDULE

PF1	3'-0"x3'-0"x8" THICK CONCRETE PAD FOOTING c/w (4) 15M BARS EACH WAY, CHAIRED 3" CLEAR OF GRADE
-----	--



1 FOUNDATION PLAN
SCALE: 1/4"=1'-0"

REVISIONS

NO.	DATE	DESCRIPTION
0	210812	CONSTRUCTION
1	211122	REVISION

PROJECT
DOLL
RESIDENCE
2871 MARINE DRIVE,
BLIND BAY, BC

DRAWING
FOUNDATION
PLAN

FILE
21-207
DATE
22 NOVEMBER 2021
SCALE
AS NOTED
DESIGN
CD
ENGINEER
CW
SEAL

SHEET NUMBER	REV
S1.1	1

REVISIONS

NO.	DATE	DESCRIPTION
0	210812	CONSTRUCTION
1	211122	REVISION

PROJECT

DOLL RESIDENCE

2871 MARINE DRIVE,
BLIND BAY, BC

DRAWING

FOUNDATION DETAILS & SECTIONS

FILE
21-207

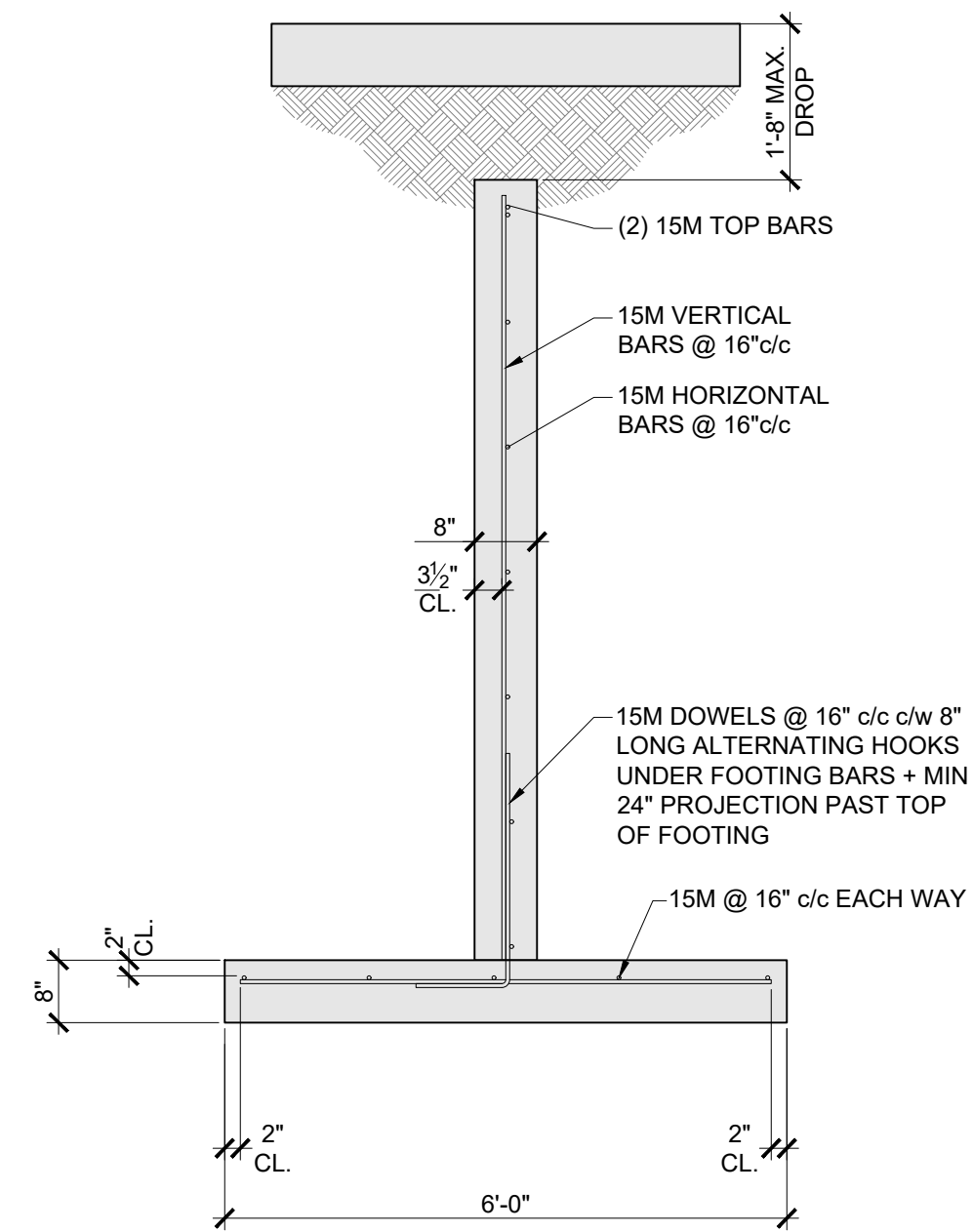
DATE
22 NOVEMBER 2021

SCALE
AS NOTED

DESIGN
CD

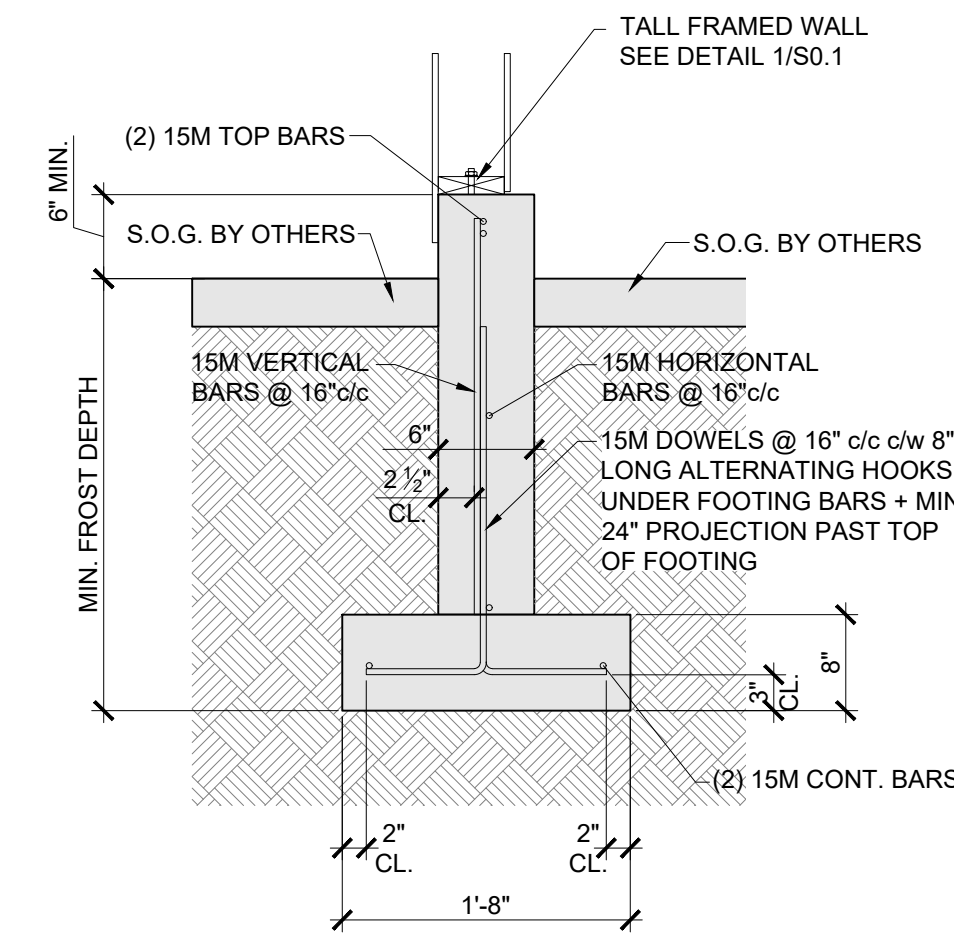
ENGINEER
CW

SEAL



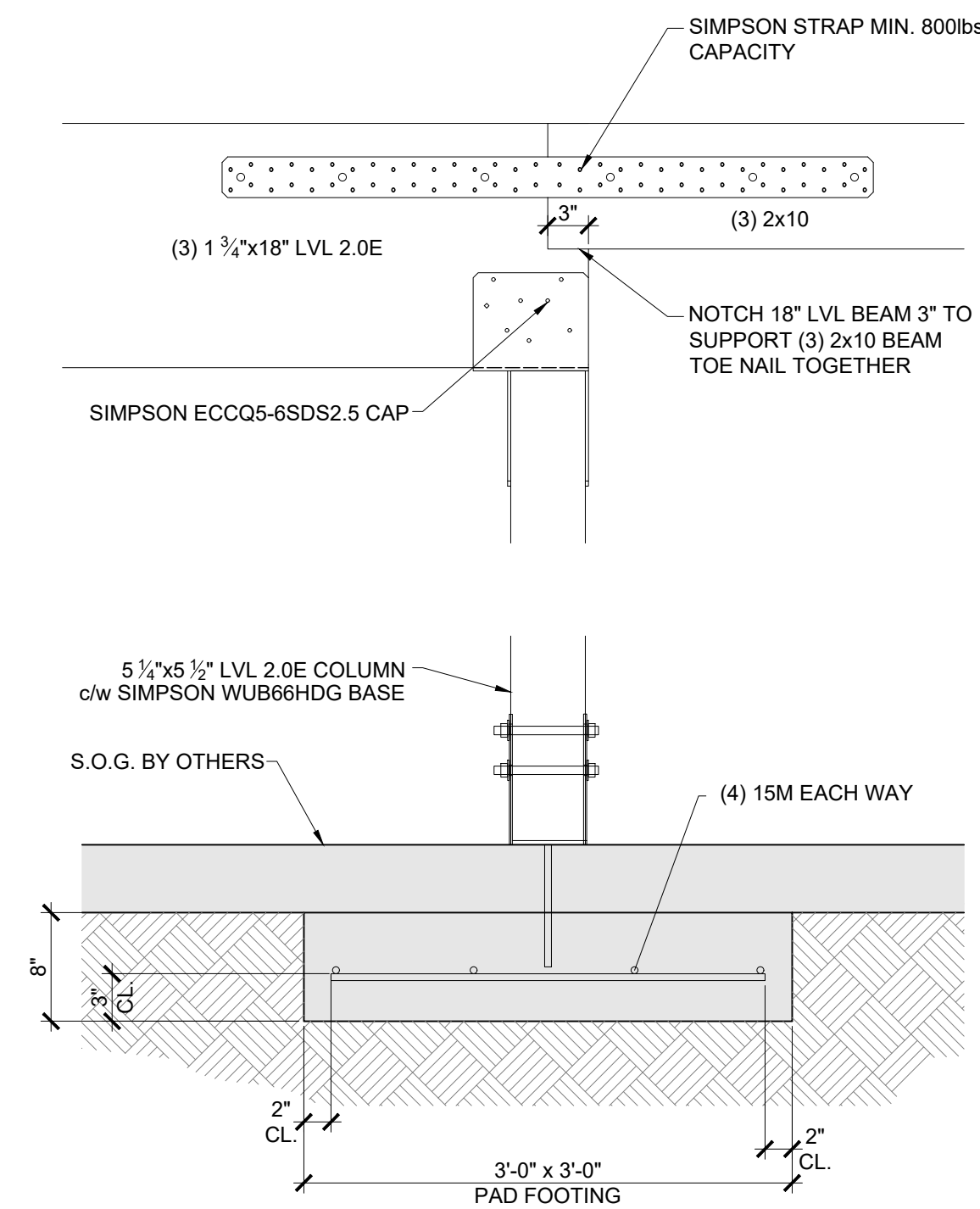
1 BUTTRESS WALL DETAIL FW5

S1.1 SCALE: 1/2"=1'-0"



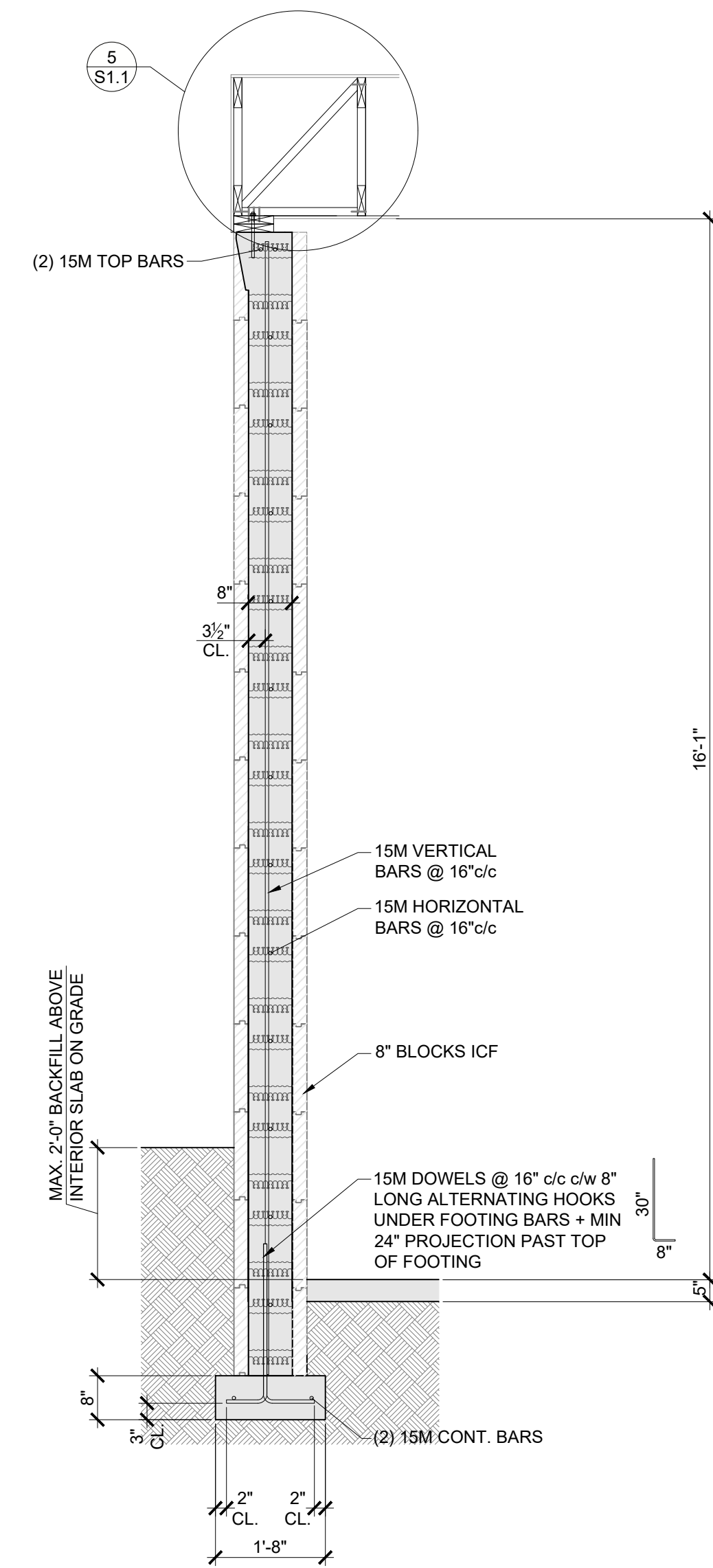
2 FOUNDATION WALL DETAIL FW1

S1.1 SCALE: 3/4"=1'-0"



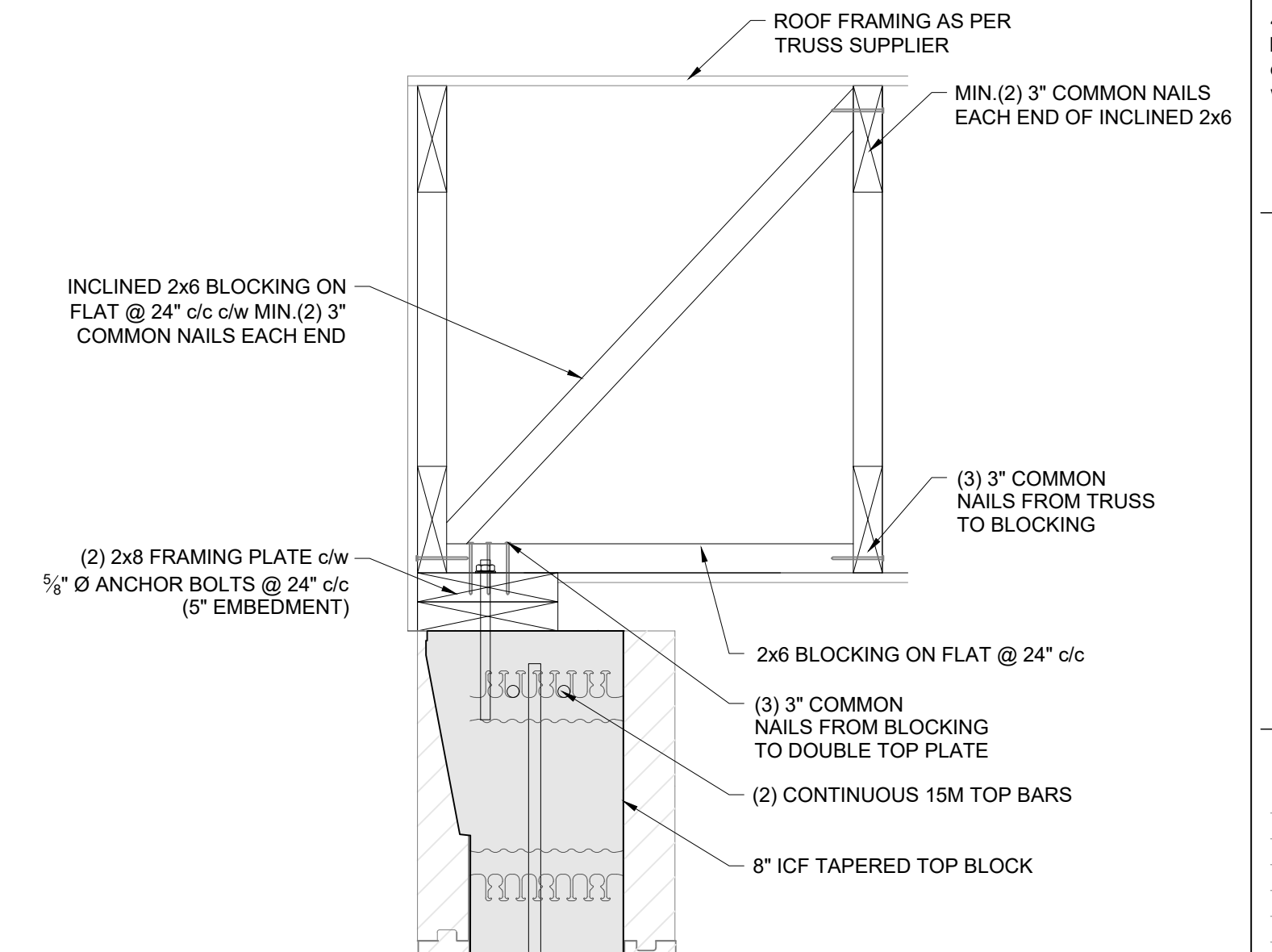
3 PAD FOOTING DETAIL

S1.1 SCALE: 1"=1'-0"



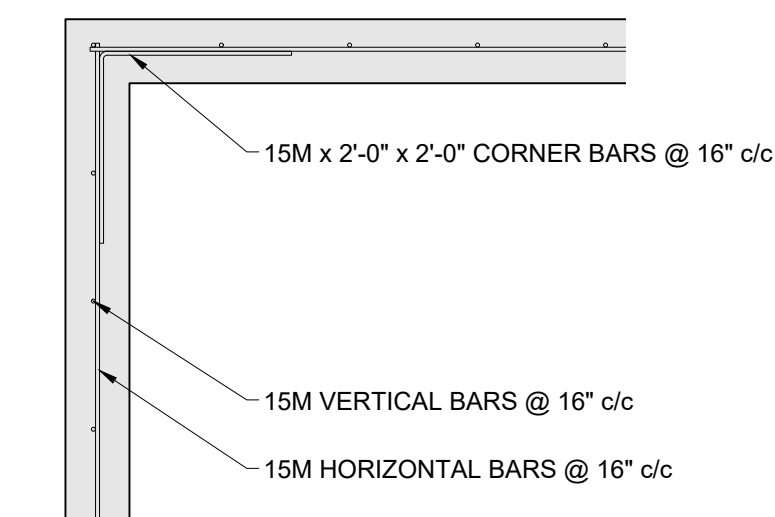
4 FOUNDATION WALL DETAIL FW3

S1.1 SCALE: 1/2"=1'-0"



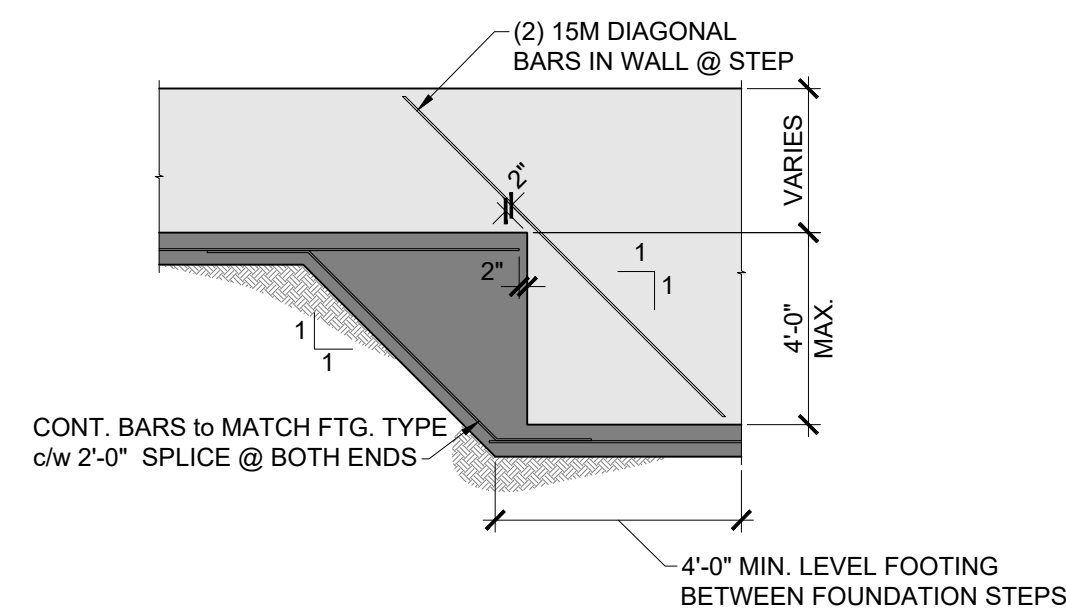
5 PARALLEL TRUSS CONNECTION

S1.1 SCALE: 1 1/2"=1'-0"



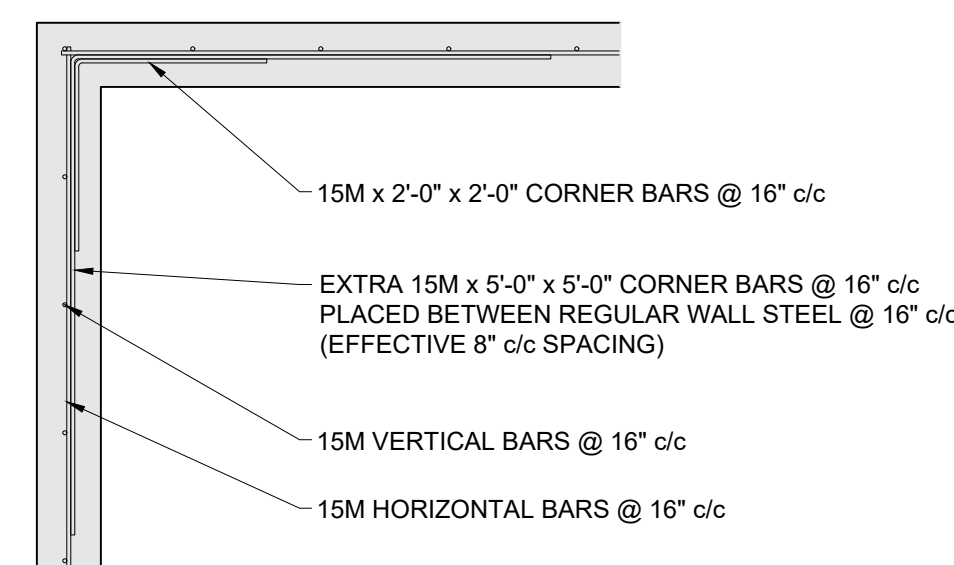
6 TYP. CORNER BAR DETAIL

S1.1 SCALE: 1"=1'-0"



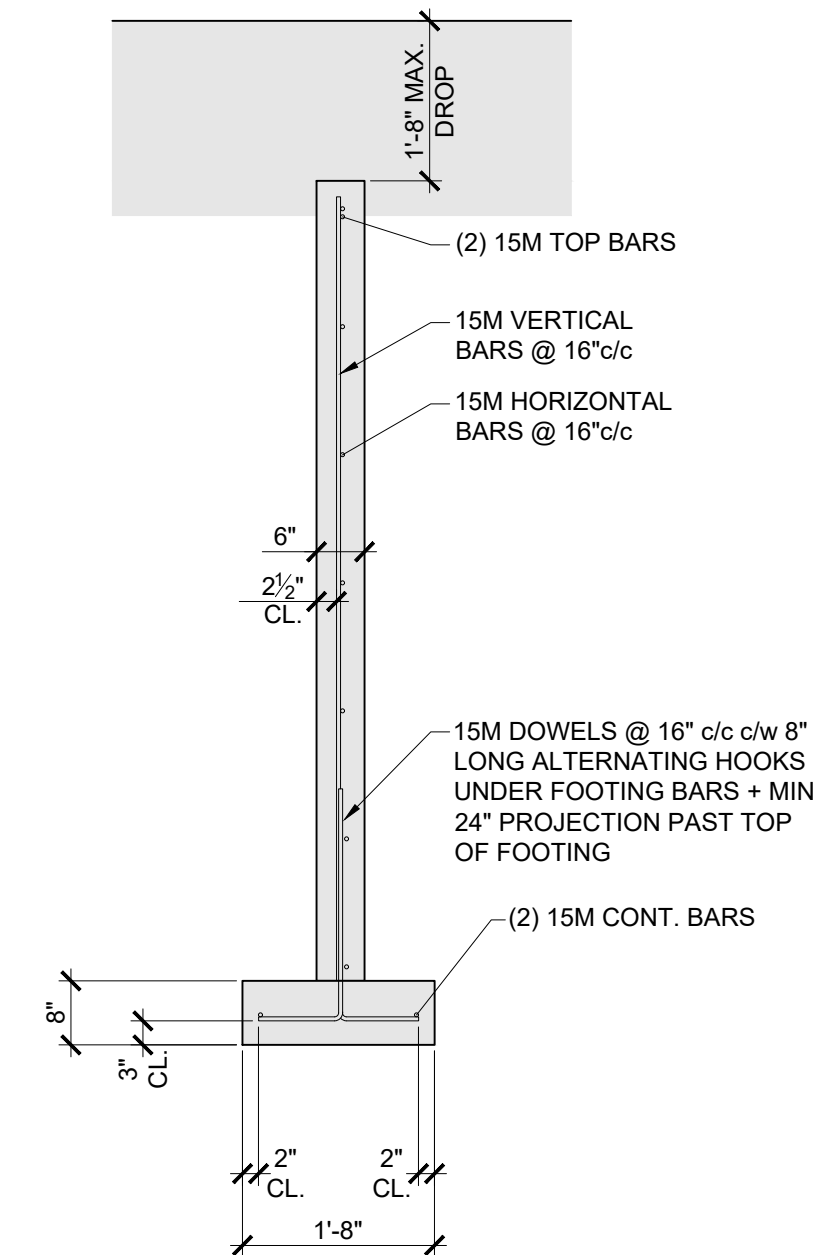
7 STEP FOOTING DETAIL

SCALE: N.T.S.



8 EXTRA CORNER BAR DETAIL

S1.1 SCALE: 1"=1'-0"



9 BUTTRESS WALL DETAIL FW4

S1.1 SCALE: 1/2"=1'-0"