



PUBLIC WORKS, UTILITIES & PARKS  
100-30 STREET SE  
PO BOX 40 SALMON ARM, BC V1E 4N2  
Phone: 250-803-4080 FAX 250-803-4092

### EMAIL NOTICE

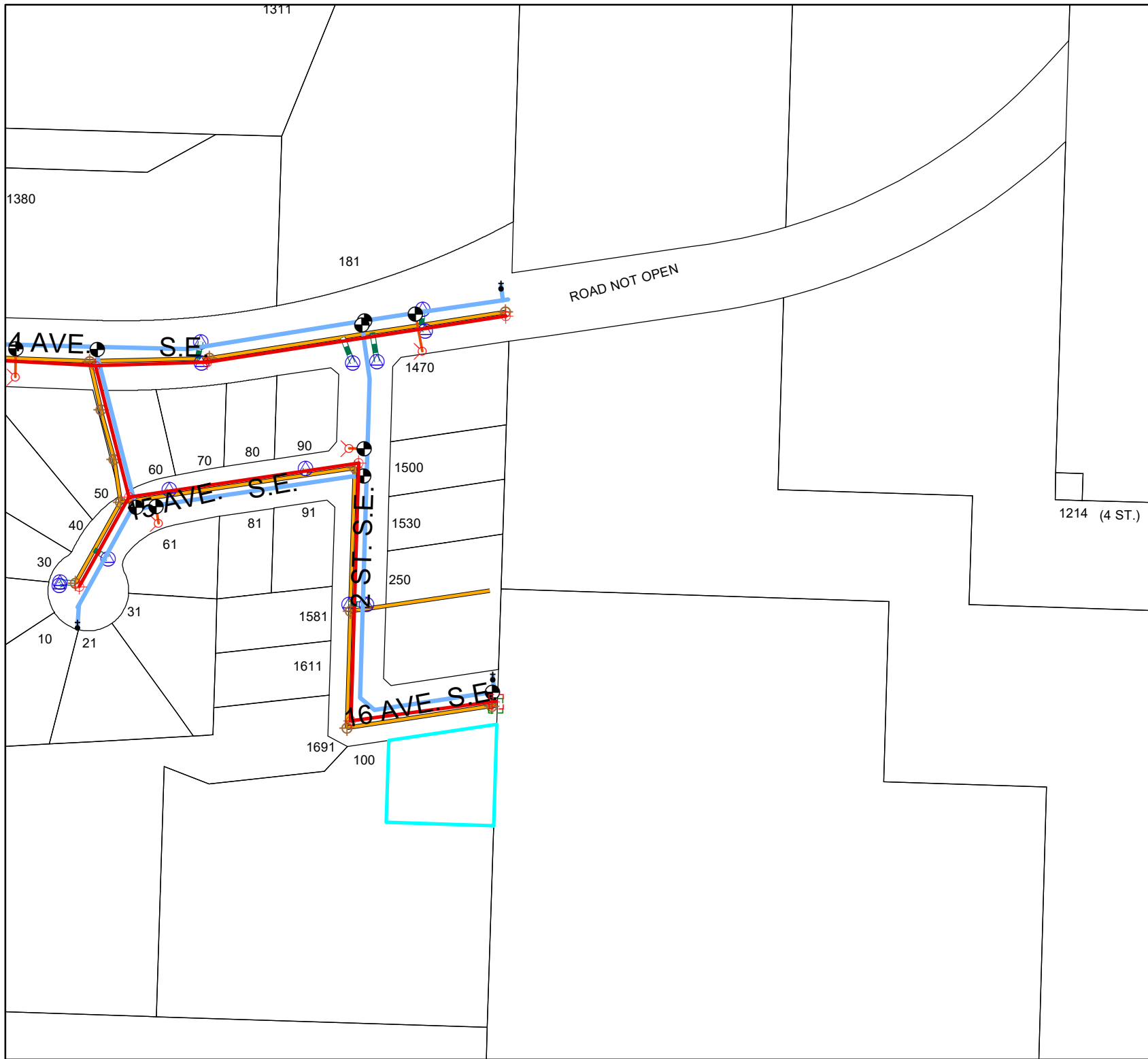
To: marc@woodcreek.ca  
Company: Wood Creek Construction Ltd.  
# Of Pages: 2 (Including this one)  
**FROM: Salmon Arm Public Works/Utilities/Parks Department**

**MESSAGE: NO MUNICIPAL LOCATES**

**BYDP TICKET: 20212114308**

**SERVICE LOCATION REQUEST: 241 16 AVENUE SE**

**THIS MESSAGE IS INTENDED ONLY FOR THE USE OF THE ADDRESSEE AND MIGHT CONTAIN INFORMATION THAT IS PRIVILEGED, CONFIDENTIAL, AND EXEMPT FROM DISCLOSURE.** If the reader of this message is not the intended recipient or an employee of the agent responsible for delivering the message to the intended recipient, you are hereby notified that any dissemination, distribution, or copying of the communication is strictly prohibited. If you have received this communication in error, please notify us immediately by telephone and return the original message to us by mail. Thank you.



**Legend**

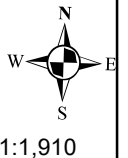
**Street\_Lights by fixture**

- LED, F\_FIXTURE**
- LED
  - Residential
  - Ornamental
  - Ornamental Davit
  - Wharf Light
  - Parking Lot Lights
  - Davit
  - Hydro Davit
  - Field Lights
  - Not Installed
  - ▲ Other
  - TCH
  - End Cap
  - ⊗ Unknown Valve
  - ⊗ Butterfly Valve
  - ⊗ Gate Valve
  - ⊗ Manhole
  - ⊗ DROP Manhole

**Sani\_Mains**

**Pipes**

- Force Main
- Gravity Main
- Air Release
- ⬇ Blow Off
- ⊗ Butterfly
- Check
- ⬇ Curb Stop
- ⬇ Drain
- ⊗ Gate
- ⊗ Normally Closed
- ⊗ Pressure Reducing
- ⊗ Water Hydrant
- Water Hydrant Lead
- <all other values>
- Water Pressure Zone 1
- Water Pressure Zone 2
- Water Pressure Zone 3
- Water Pressure Zone 3A
- Water Pressure Zone 4
- Water Pressure Zone 5
- Storm End Cap
- ⊗ Storm Manhole
- ⊗ Storm Catch Basin
- Catchbasin Lead
- Gravity
- Perforated Drain
- Parcels



1:1,910