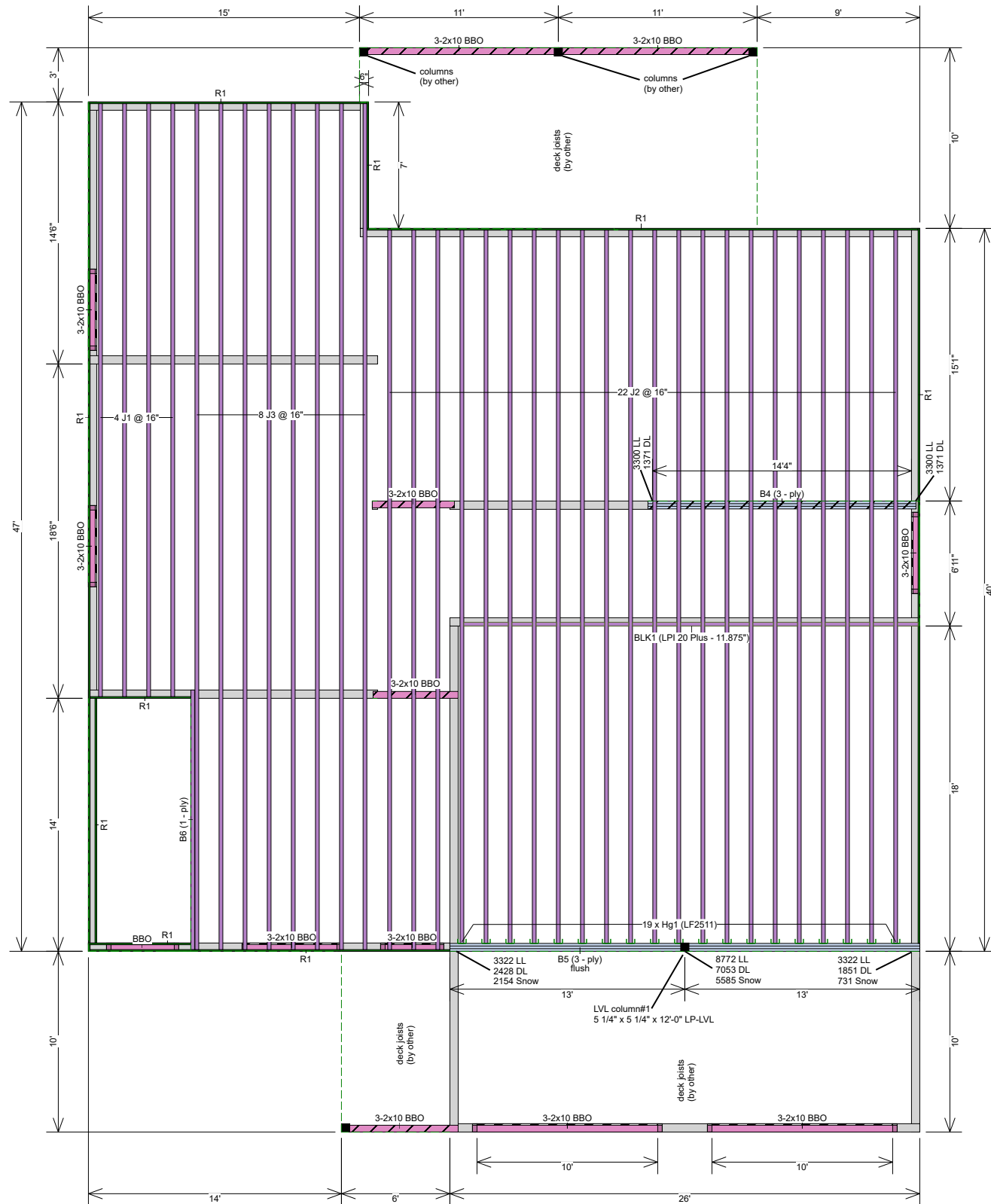


Scale 1/8 inch : 1 ft.



Ground Floor							
I Joist							
Label	Description	Width	Depth	Qty	Plies	Pcs	Length
B6	LPI 20 Plus	2.5	11.875			1	15-0-0
J3	LPI 20 Plus	2.5	11.875			8	47-0-0
J2	LPI 20 Plus	2.5	11.875			22	40-0-0
J1	LPI 20 Plus	2.5	11.875			4	33-0-0
						<b>Total LF:</b>	<b>1388'</b>
Blocking							
Label	Description	Width	Depth	Qty	Plies	Pcs	Length
BLK1	LPI 20 Plus	2.5	11.875	LinFt		Varies	22-0-0
Rim Board							
Label	Description	Width	Depth	Qty	Plies	Pcs	Length
R1	LP APA Rated OSB 1.125 X 11.875	1.125	11.875			16	12-0-0
LVL/LSL							
Label	Description	Width	Depth	Qty	Plies	Pcs	Length
B5	LP-LVL 2900Fb-2.0E	1.75	11.875	1	3	3	26-0-0
B4	LP-LVL 2900Fb-2.0E	1.75	11.875	1	3	3	15-0-0
						<b>Total LF:</b>	<b>123'</b>
Hanger							
Label	Pcs	Description	Skew	Slope	Beam/Girder fasteners	Supported Member	
Hg1	19	LF2511			12 10d	1 #8x1 1/4WS	

### Important Notes

Review Manufacturers' installation guide for additional structural details where necessary. Review all beam and header spec drawings for bearing requirements prior to framing.

Do Not cut or notch top or bottom flanges of joists to provide clearance for plumbing fixtures. Offset and/or install additional joists to provide clearance.

All Steel beams and columns by others. All dimensional stock (SPF and DF) Joists, Beams, Headers and Columns are by others, If listed on this layout, it is for informational purposes only. Refer to QUOTE or INVOICE for exact quantities of materials that are included.

Joist hangers, Mid-Span blocking, floor sheathing fasteners and other connection details, may increase risk of noise (squeaks) in a floor system. It is the responsibility of the installer to ensure adequate measures are taken to prevent movement at all connections. Squeaks caused by such conditions are not covered under warranty.

Legend	
	Wall
	Wall Opening
	LP APA Rated OSB 1.125 X 11.875
	LPI 20 Plus 11.875
	LP-LVL 2900Fb-2.0E 1.75 X 11.875 (Dropped)
	LP-LVL 2900Fb-2.0E 1.75 X 11.875
	4.5 X 9.25 (Dropped)
	4.55 X 9.25 (Dropped)



### Salmon Arm Truss Systems LTD

5231 46th Ave SE  
Salmon Arm, BC  
CA  
V1E 1X2  
250 832 8238

Description  
Layout Name  
44658-F

Shipping  
241 - 16th Ave S.E.  
Salmon Arm

Created  
October 14, 2021

Plotted  
January 03, 2022

Designer  
Andy Andreasen

Project  
Wood Creek (Lot#21)

This drawing is a general interpretation of the construction drawings for this project and assumes the adequacy of the supporting structure. It is intended only as a general guide for the engineered wood products placement. All Dimensions, quantities and details must be carefully checked, verified by comparison to the actual field conditions and are the responsibility of the client, architect/engineer and builder. Engineered floor system does not account for roof loading unless noted otherwise.

REVIEWED & APPROVED BY:

Printed Name

Signature

### Ground Floor

Design Method  
Building Code

LSD (Canada)  
NBCC 2015 / BCBC 2018

### Floor

Loads	
Live	40
Dead	15
Deflection Joist	
LL Span /	480
TL Span /	240
Deflection Flush Girder	
LL Span /	360
TL Span /	240
Deflection Dropped Girder	
LL Span /	360
TL Span /	240
Deflection Header	
LL Span /	360
TL Span /	240
Decking	
Decking	SPF Plywood
Thickness	3/4"
Fastener	Nailed & Glued
Vibration	
Ceiling:	Gypsum 1/2"