

Salmon Arm Truss Systems LTD

5231 46th Ave SE
Salmon Arm, BC
CA
V1E 1X2
250 832 8238

Description	
Layout Name	44761-F1
Shipping	1020 - 17th Ave S.E. Salmon Arm
Created	August 06, 2021
Plotted	February 24, 2022
Designer	Andy Andreasen
Project	Wood Creek (Hanson)

This drawing is a general interpretation of the construction drawings for this project and assumes the adequacy of the supporting structure. It is intended only as a general guide for the engineered wood products placement. All Dimensions, quantities and details must be carefully checked, verified by comparison to the actual field conditions and are the responsibility of the client, architect/engineer and builder. Engineered floor system does not account for roof loading unless noted otherwise.

REVIEWED & APPROVED BY:










Phil Cates Feb 3 2022
&
Patsy Kennedy Jan 11 2022

Lower Floor

Design Method: LSD (Canada)
Building Code: NBCC 2015 / BCBC 2018

Loads	
Live	40
Dead	15
Deflection Joist	
LL Span / L	480
TL Span / L	240
Deflection Flush Girder	
LL Span / L	360
TL Span / L	240
Deflection Dropped Girder	
LL Span / L	360
TL Span / L	240
Deflection Header	
LL Span / L	360
TL Span / L	240
Decking	SPF Plywood
Thickness	3/4"
Fastener	Nailed & Glued
Vibration	
Ceiling:	Gypsum 1/2"

Legend

	Point Load Support
	Load from Above
	Wall
	Wall Opening
	LP APA Rated OSB 1.125 X 11.875
	LPI 20 Plus 11.875
	LP-LVL 2900Fb-2.0E 1.75 X 11.875
	LP-LVL 2900Fb-2.0E 1.75 X 14 (Dropped)
	5.5 X 14

Lower Floor							
I Joist							
Label	Description	Width	Depth	Qty	Plies	Pcs	Length
B10	LPI 20 Plus	2.5	11.875			2	20-0-0
B7	LPI 20 Plus	2.5	11.875			1	14-0-0
B9	LPI 20 Plus	2.5	11.875			1	3-0-0
						Total LF:	57'
J6	LPI 20 Plus	2.5	11.875			16	33-0-0
J5	LPI 20 Plus	2.5	11.875			3	22-0-0
J7	LPI 20 Plus	2.5	11.875			1	17-0-0
J2	LPI 20 Plus	2.5	11.875			2	14-0-0
J1	LPI 20 Plus	2.5	11.875			10	7-0-0
						Total LF:	709'
Blocking							
Label	Description	Width	Depth	Qty	Plies	Pcs	Length
BLK1	LPI 20 Plus	2.5	11.875	LinFt		Varies	29-0-0
Rim Board							
Label	Description	Width	Depth	Qty	Plies	Pcs	Length
R1	LP APA Rated OSB 1.125 X 11.875	1.125	11.875			9	12-0-0
LVL/LSL							
Label	Description	Width	Depth	Qty	Plies	Pcs	Length
B11	LP-LVL 2900Fb-2.0E	1.75	11.875	1	2	2	5-0-0
						Total LF:	10'
H3	LP-LVL 2900Fb-2.0E	1.75	14	1	3	3	19-0-0
						Total LF:	57'
Hanger							
Label	Pcs	Description	Skew	Slope	Beam/Girder fasteners	Supported Member fasteners	
Hg1	32	LT251188			4 10d	2 10dx1 1/2	

Important Notes

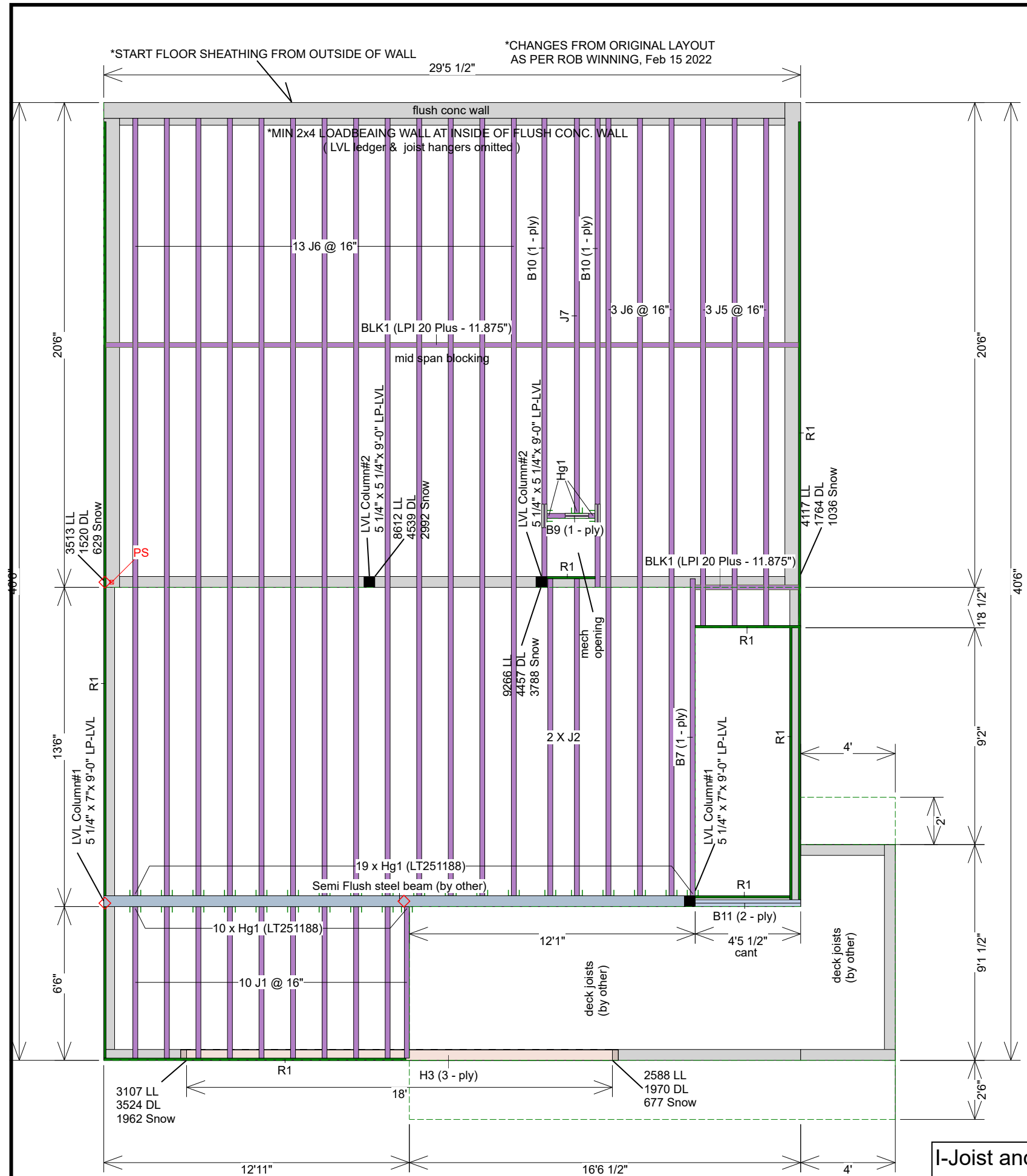
Review Manufacturers' installation guide for additional structural details where necessary. Review all beam and header spec drawings for bearing requirements prior to framing.

Do Not cut or notch top or bottom flanges of joists to provide clearance for plumbing fixtures. Offset and/or install additional joists to provide clearance.

All Steel beams and columns by others. All dimensional stock (SPF and DF) Joists, Beams, Headers and Columns are by others, If listed on this layout, it is for informational purposes only. Refer to QUOTE or INVOICE for exact quantities of materials that are included.

Joist hangers, Mid-Span blocking, floor sheathing fasteners and other connection details, may increase risk of noise (squeaks) in a floor system. It is the responsibility of the installer to ensure adequate measures are taken to prevent movement at all connections. Squeaks caused by such conditions are not covered under warranty.

I-Joist and beam packages are rough cut / trim to exact length on site



Salmon Arm Truss Systems LTD

5231 46th Ave SE
Salmon Arm, BC
CA
V1E 1X2
250 832 8238

Description

Layout Name
44761-F1

Shipping
1020 - 17th Ave S.E.
Salmon Arm

Created
August 06, 2021

Plotted
February 24, 2022

Designer
Andy Andreasen

Project
Wood Creek (Hanson)

This drawing is a general interpretation of the construction drawings for this project and assumes the adequacy of the supporting structure. It is intended only as a general guide for the engineered wood products placement. All Dimensions, quantities and details must be carefully checked, verified by comparison to the actual field conditions and are the responsibility of the client, architect/engineer and builder. Engineered floor system does not account for roof loading unless noted otherwise.

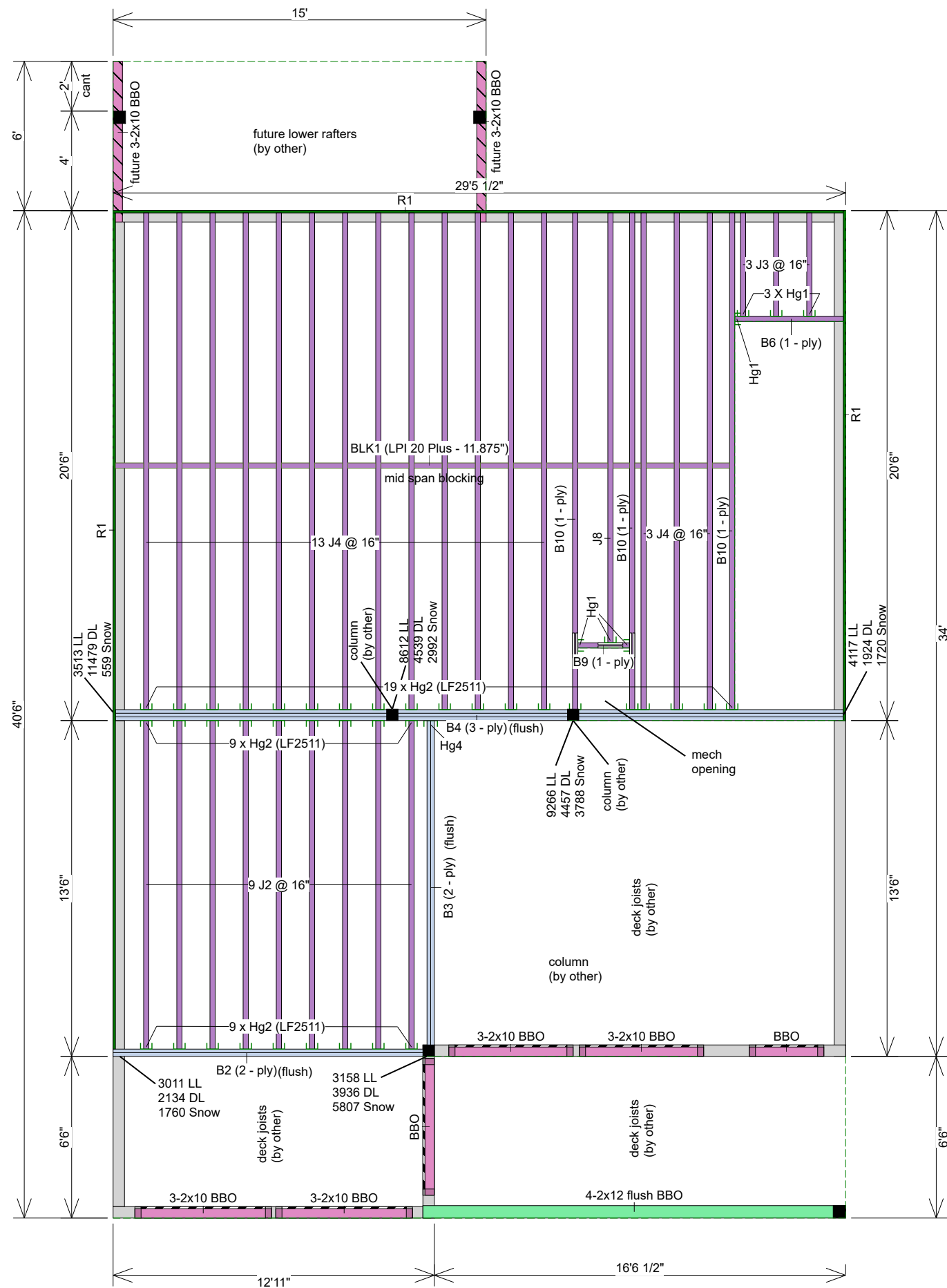
REVIEWED & APPROVED BY:

Phil Cates Feb 3 2022
&
Patsy Kennedy Jan 11 2022

Upper Floor

Design Method
Building Code
LSD (Canada)
NBCC 2015 / BCBC 2018

Loads	
Live	40
Dead	15
Deflection Joist	
LL Span L/	480
TL Span L/	240
Deflection Flush Girder	
LL Span L/	360
TL Span L/	240
Deflection Dropped Girder	
LL Span L/	360
TL Span L/	240
Deflection Header	
LL Span L/	360
TL Span L/	240
Decking	
Decking	SPF Plywood
Thickness	3/4"
Fastener	Nailed & Glued
Vibration	
Ceiling:	Gypsum 1/2"



Label	Description	Width	Depth	Qty	Plies	Pcs	Length
B10	LPI 20 Plus	2.5	11.875			3	20-0-0
B6	LPI 20 Plus	2.5	11.875			1	5-0-0
B9	LPI 20 Plus	2.5	11.875			1	3-0-0
						Total LF:	68'
J4	LPI 20 Plus	2.5	11.875			16	20-0-0
J8	LPI 20 Plus	2.5	11.875			1	18-0-0
J2	LPI 20 Plus	2.5	11.875			9	14-0-0
J3	LPI 20 Plus	2.5	11.875			3	5-0-0
						Total LF:	479'

Label	Description	Width	Depth	Qty	Plies	Pcs	Length
BLK1	LPI 20 Plus	2.5	11.875	LinFt		Varies	21-0-0

Label	Description	Width	Depth	Qty	Plies	Pcs	Length
R1	LP APA Rated OSB 1.125 X 11.875	1.125	11.875			7	12-0-0

Label	Description	Width	Depth	Qty	Plies	Pcs	Length
B4	LP-LVL 2900Fb-2.0E	1.75	11.875	1	3	3	30-0-0
B3	LP-LVL 2900Fb-2.0E	1.75	11.875	1	2	2	14-0-0
B2	LP-LVL 2900Fb-2.0E	1.75	11.875	1	2	2	13-0-0
						Total LF:	144'

Label	Pcs	Description	Skew	Slope	Beam/Girder fasteners	Supported Member fasteners
Hg1	7	LT251188			4 10d	2 10dx1 1/2
Hg2	37	LF2511			12 10d	1 #8x1 1/4WS
Hg4	1	HGUS410			46 16d	16 16d

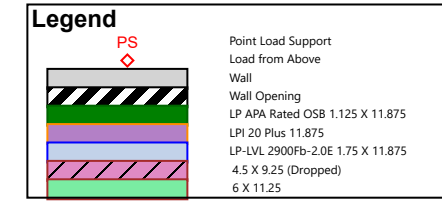
Important Notes

Review Manufacturers' installation guide for additional structural details where necessary. Review all beam and header spec drawings for bearing requirements prior to framing.

Do Not cut or notch top or bottom flanges of joists to provide clearance for plumbing fixtures. Offset and/or install additional joists to provide clearance.

All Steel beams and columns by others. All dimensional stock (SPF and DF) Joists, Beams, Headers and Columns are by others, If listed on this layout, it is for informational purposes only. Refer to QUOTE or INVOICE for exact quantities of materials that are included.

Joist hangers, Mid-Span blocking, floor sheathing fasteners and other connection details, may increase risk of noise (squeaks) in a floor system. It is the responsibility of the installer to ensure adequate measures are taken to prevent movement at all connections. Squeaks caused by such conditions are not covered under warranty.



I-Joist and beam packages are rough cut / trim to exact length on site