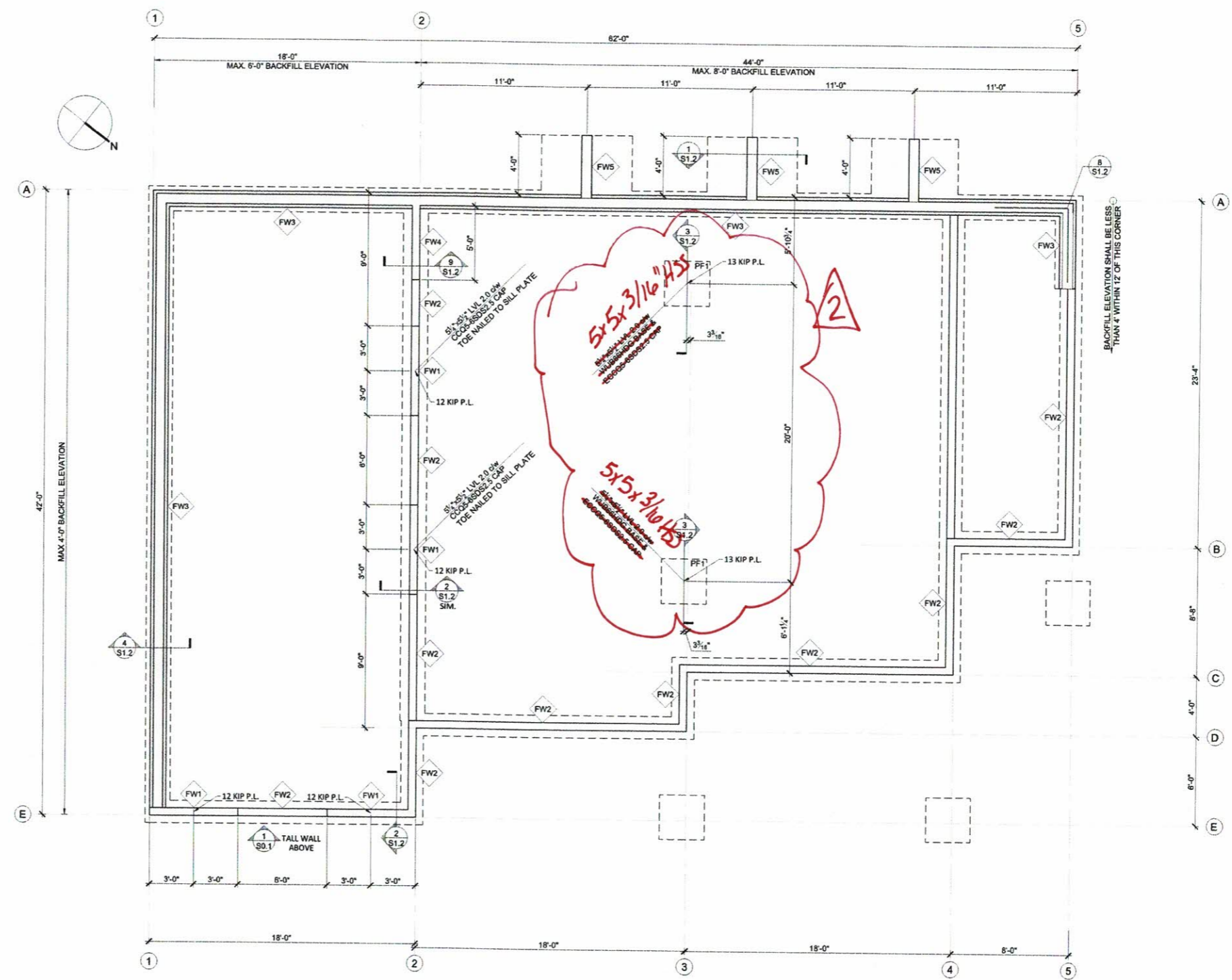


FOUNDATION WALL SCHEDULE

FW1	<p>6" FOUNDATION WALL</p> <ul style="list-style-type: none"> (2) 15M CONTINUOUS TOP BARS 15M HORIZONTAL BARS @ 16" c/c 15M VERTICAL BARS @ 16" c/c 15M FOOTING DOWELS @ 16" c/c c/w ALTERNATING HOOKS + MIN 24" PROJECTION PAST TOP OF FOOTING ALL WALL STEEL PLACED IN CENTER OF WALL ADD CORNER BARS WHERE INDICATED ON PLAN <p>20" WIDE x 8" DEEP CONCRETE STRIP FOOTING</p> <ul style="list-style-type: none"> (2) 15M CONTINUOUS BARS
FW2	PART 9 BCBC FOUNDATION WALL
FW3	<p>8" FOUNDATION WALL (AMVIC ICF BLOCK)</p> <ul style="list-style-type: none"> (2) 15M CONTINUOUS TOP BARS 15M HORIZONTAL BARS @ 16" c/c 15M VERTICAL BARS @ 16" c/c 15M FOOTING DOWELS @ 16" c/c c/w ALTERNATING HOOKS + MIN 24" PROJECTION PAST TOP OF FOOTING ALL WALL STEEL PLACED IN CENTER OF WALL ADD CORNER BARS WHERE INDICATED ON PLAN <p>20" WIDE x 8" DEEP CONCRETE STRIP FOOTING</p> <ul style="list-style-type: none"> (2) 15M CONTINUOUS BARS
FW4	<p>8" WIDE CONCRETE BUTTRESS WALL</p> <ul style="list-style-type: none"> (2) 15M CONT TOP BARS 15M HORIZONTAL BARS @ 16" c/c 15M VERTICAL BARS @ 16" c/c c/w 8" LONG ALTERNATING HOOKS UNDER FOOTING BARS + MIN 24" PROJECTION PAST TOP OF FOOTING ALL WALL STEEL PLACED IN CENTER OF WALL <p>20" WIDE x 8" DEEP CONCRETE STRIP FOOTING</p> <ul style="list-style-type: none"> (2) 15M CONTINUOUS BARS
FW5	<p>8" WIDE CONCRETE BUTTRESS WALL</p> <ul style="list-style-type: none"> (2) 15M CONT TOP BARS 15M HORIZONTAL BARS @ 16" c/c 15M VERTICAL BARS @ 16" c/c c/w 8" LONG ALTERNATING HOOKS UNDER FOOTING BARS + MIN 24" PROJECTION PAST TOP OF FOOTING ALL WALL STEEL PLACED IN CENTER OF WALL <p>72" WIDE x 8" DEEP CONCRETE STRIP FOOTING</p> <ul style="list-style-type: none"> 15M @ 16" c/c EACH WAY CHAIRED 2" CLEAR TOP OF FOOTING

PAD FOOTING SCHEDULE

PF1	<p>3'-0"x3'-0"x8" THICK CONCRETE PAD FOOTING c/w (4) 15M BARS EACH WAY, CHAIRED 3" CLEAR OF GRADE</p>
-----	---



1 FOUNDATION PLAN
SCALE: 1/4"=1'-0"

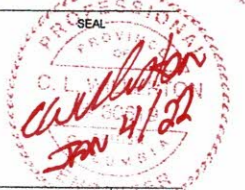
REVISIONS

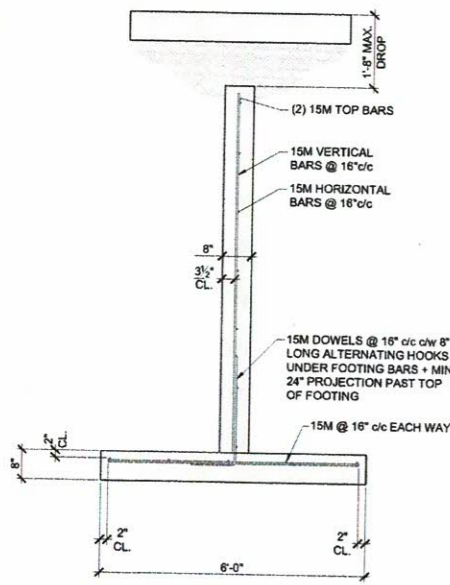
NO.	DATE	DESCRIPTION
0	210812	CONSTRUCTION
1	211122	REVISION

PROJECT
DOLL RESIDENCE
2871 MARINE DRIVE,
BLIND BAY, BC

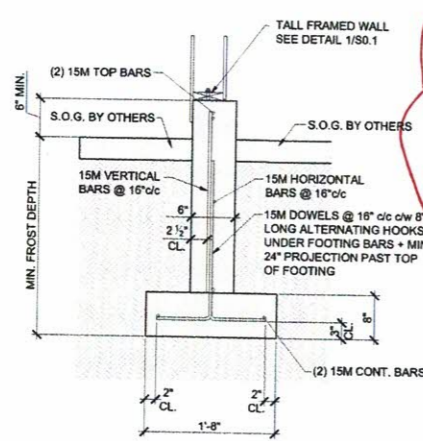
DRAWING
FOUNDATION PLAN

FILE
21-207
DATE
22 NOVEMBER 2021
SCALE
AS NOTED
DESIGN
CD
ENGINEER
CW

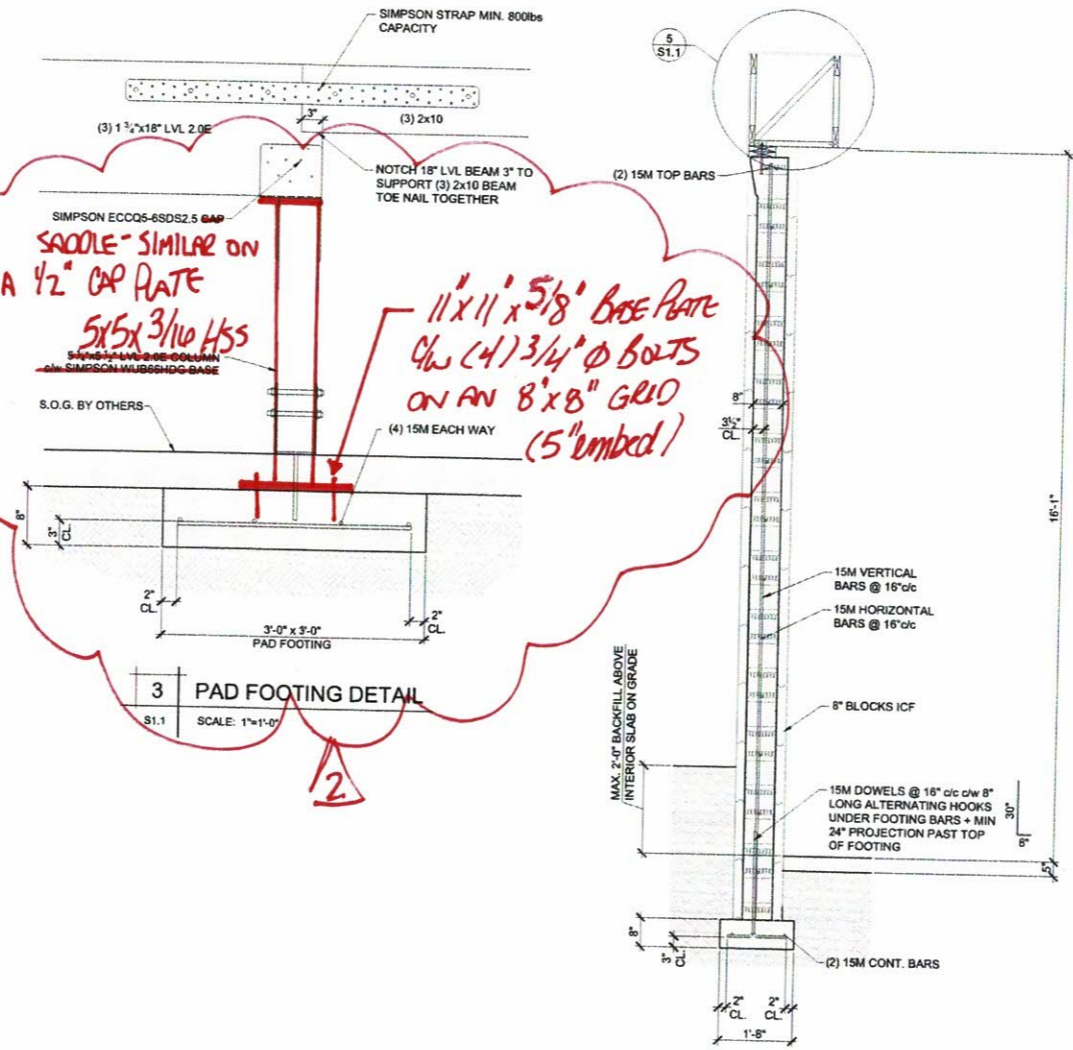




1 BUTTRESS WALL DETAIL FW5
S1.1 SCALE: 1/2"=1'-0"

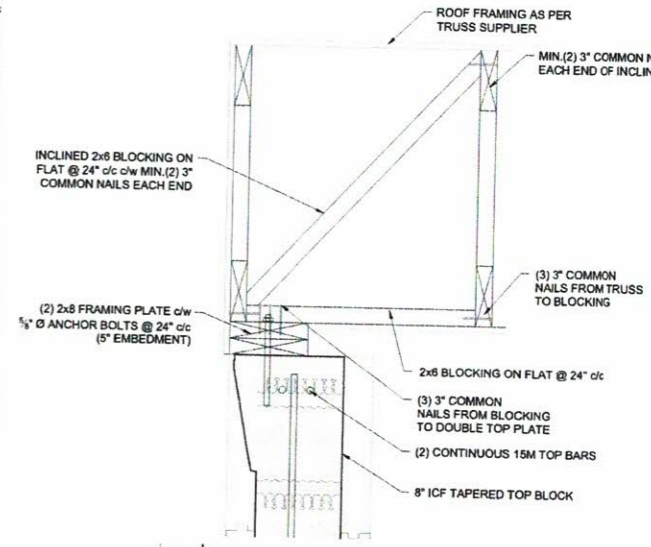


2 FOUNDATION WALL DETAIL FW1
S1.1 SCALE: 3/4"=1'-0"

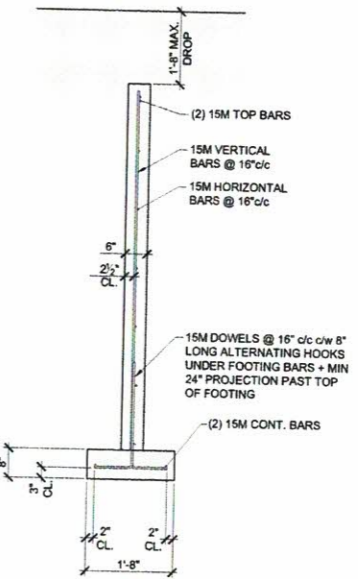


3 PAD FOOTING DETAIL
S1.1 SCALE: 1"=1'-0"

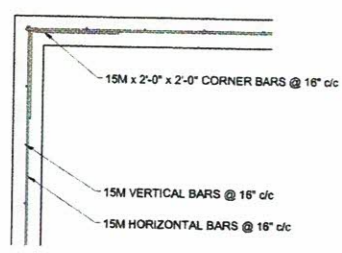
4 FOUNDATION WALL DETAIL FW3
S1.1 SCALE: 1/2"=1'-0"



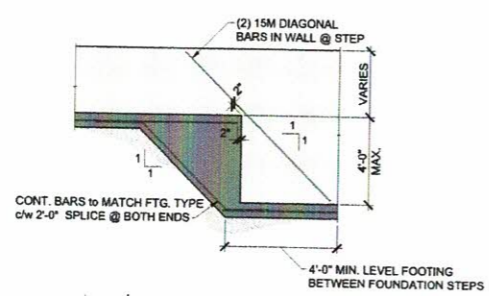
5 PARALLEL TRUSS CONNECTION
S1.1 SCALE: 1 1/2"=1'-0"



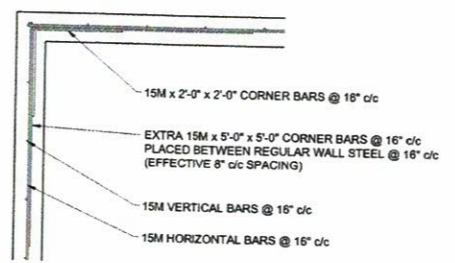
9 BUTTRESS WALL DETAIL FW4
S1.1 SCALE: 1/2"=1'-0"



6 TYP. CORNER BAR DETAIL
SCALE: 1"=1'-0"



7 STEP FOOTING DETAIL
SCALE: N.T.S.



8 EXTRA CORNER BAR DETAIL
S1.1 SCALE: 1"=1'-0"

REVISIONS

NO.	DATE	DESCRIPTION
0	210812	CONSTRUCTION
1	211122	REVISION

PROJECT
DOLL RESIDENCE
2871 MARINE DRIVE,
BLIND BAY, BC

DRAWING
FOUNDATION DETAILS & SECTIONS

FILE
21-207
DATE
22 NOVEMBER 2021
SCALE
AS NOTED
DESIGN
CD
ENGINEER
CW

