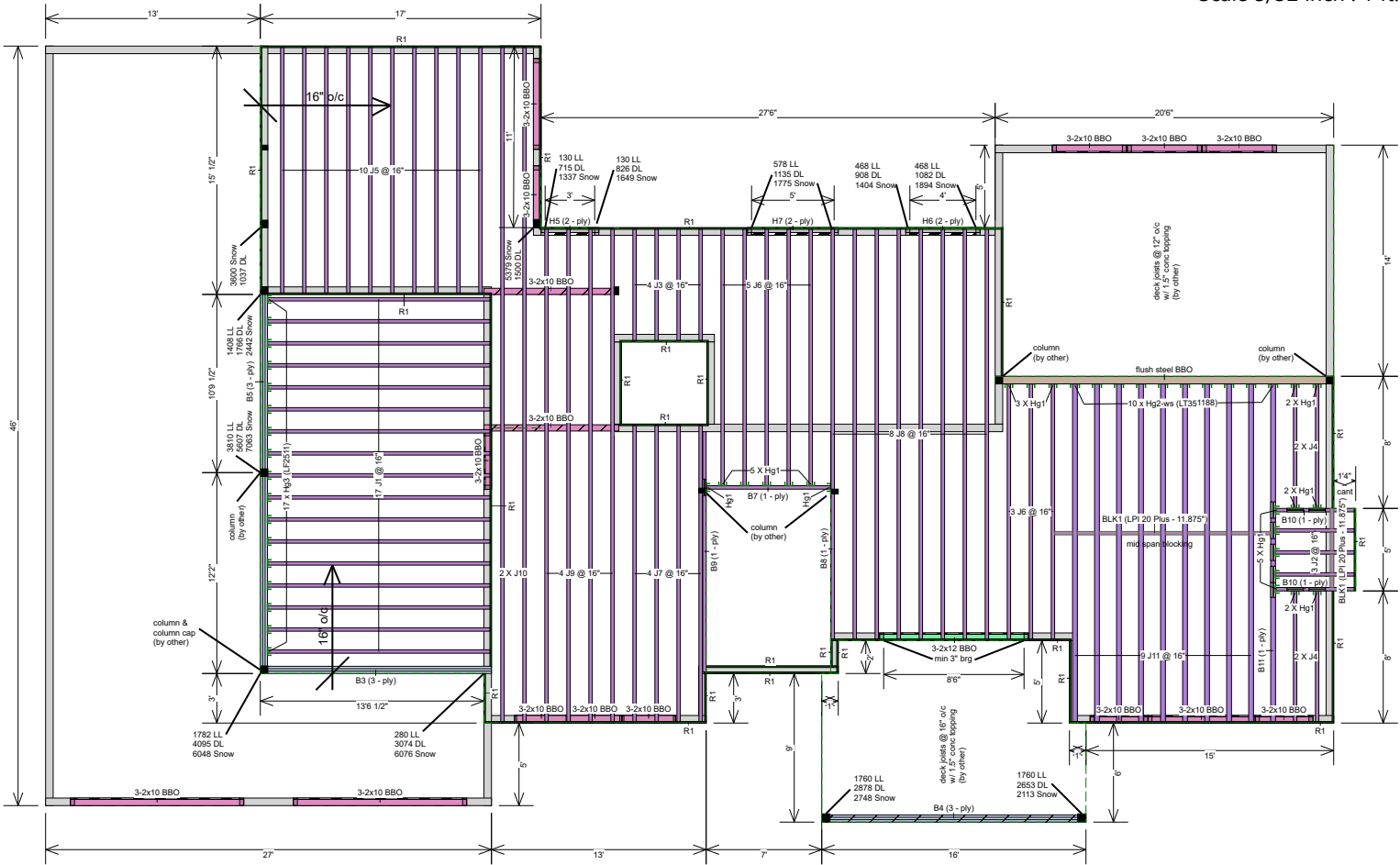


Scale 3/32 inch : 1 ft.



I-Joist and beam packages are rough cut / trim to exact length on site

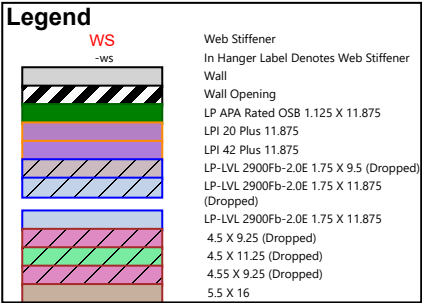
Ground Floor I Joist							
Label	Description	Width	Depth	Qty	Plies	Pcs	Length
B9	LPI 20 Plus	2.5	11.875			1	15-0-0
B8	LPI 20 Plus	2.5	11.875			1	13-0-0
B7	LPI 20 Plus	2.5	11.875			1	8-0-0
B10	LPI 20 Plus	2.5	11.875			2	5-0-0
						Total LF:	46'
J10	LPI 20 Plus	2.5	11.875			2	41-0-0
J9	LPI 20 Plus	2.5	11.875			4	30-0-0
J8	LPI 20 Plus	2.5	11.875			8	25-0-0
J7	LPI 20 Plus	2.5	11.875			4	18-0-0
J6	LPI 20 Plus	2.5	11.875			8	16-0-0
J5	LPI 20 Plus	2.5	11.875			10	15-0-0
J1	LPI 20 Plus	2.5	11.875			17	14-0-0
J4	LPI 20 Plus	2.5	11.875			4	8-0-0
J3	LPI 20 Plus	2.5	11.875			4	7-0-0
J2	LPI 20 Plus	2.5	11.875			3	5-0-0
						Total LF:	1065'
J11	LPI 42 Plus	3.5	11.875			9	21-0-0
						Total LF:	189'
B11	LPI 42 Plus	3.5	11.875			1	21-0-0
						Total LF:	21'

Blocking							
Label	Description	Width	Depth	Qty	Plies	Pcs	Length
BLK1	LPI 20 Plus	2.5	11.875	LinFt		Varies	15-0-0

Rim Board							
Label	Description	Width	Depth	Qty	Plies	Pcs	Length
R1	LP APA Rated OSB 1.125 X 11.875	1.125	11.875			20	12-0-0

LVL/LSL							
Label	Description	Width	Depth	Qty	Plies	Pcs	Length
H7	LP-LVL 2900Fb-2.0E	1.75	9.5	1	2	2	6-0-0
H6	LP-LVL 2900Fb-2.0E	1.75	9.5	1	2	2	5-0-0
H5	LP-LVL 2900Fb-2.0E	1.75	9.5	1	2	2	4-0-0
						Total LF:	30'
B5	LP-LVL 2900Fb-2.0E	1.75	11.875	1	3	3	24-0-0
B4	LP-LVL 2900Fb-2.0E	1.75	11.875	1	3	3	16-0-0
B3	LP-LVL 2900Fb-2.0E	1.75	11.875	1	3	3	14-0-0
						Total LF:	162'

Hanger							
Label	Pcs	Description	Skew	Slope	Beam/Girder fasteners	Supported Member fasteners	
Hg1	21	LT251188			4 10d	2 10dx1 1/2	
Hg2	10	LT351188			4 10d	2 10dx1 1/2	
Hg3	17	LF2511			12 10d	1 #8x1 1/4WS	



Important Notes

Review Manufacturers' installation guide for additional structural details where necessary. Review all beam and header spec drawings for bearing requirements prior to framing.

Do Not cut or notch top or bottom flanges of joists to provide clearance for plumbing fixtures. Offset and/or install additional joists to provide clearance.

All Steel beams and columns by others. All dimensional stock (SPF and DF) Joists, Beams, Headers and Columns are by others, If listed on this layout, it is for informational purposes only. Refer to QUOTE or INVOICE for exact quantities of materials that are included.

Joist hangers, Mid-Span blocking, floor sheathing fasteners and other connection details, may increase risk of noise (squeaks) in a floor system. It is the responsibility of the installer to ensure adequate measures are taken to prevent movement at all connections. Squeaks caused by such conditions are not covered under warranty.



Salmon Arm Truss Systems LTD

5231 46th Ave SE
Salmon Arm, BC
CA
V1E 1X2
250 832 8238

Description
Layout Name
44978-F
Shipping
1170 - 19th Street S.E. Salmon Arm
Created
April 08, 2022
Plotted
April 08, 2022
Designer
Andy Andreasen
Project
Wood Creek (Green)

This drawing is a general interpretation of the construction drawings for this project and assumes the adequacy of the supporting structure. It is intended only as a general guide for the engineered wood products placement. All Dimensions, quantities and details must be carefully checked, verified by comparison to the actual field conditions and are the responsibility of the client, architect/engineer and builder. Engineered floor system does not account for roof loading unless noted otherwise.

REVIEWED & APPROVED BY:

Printed Name

Signature

Ground Floor

Design Method
Building Code
LSD (Canada)
NBCC 2015 / BCBC 2018

Floor

Loads	
Live	40
Dead	15
Deflection Joist	
LL Span L/	480
TL Span L/	240
Deflection Flush Girder	
LL Span L/	360
TL Span L/	240
Deflection Dropped Girder	
LL Span L/	360
TL Span L/	240
Deflection Header	
LL Span L/	360
TL Span L/	240
Decking	
Decking	SPF Plywood
Thickness	3/4"
Fastener	Nailed & Glued
Vibration	
Ceiling:	Gypsum 1/2"