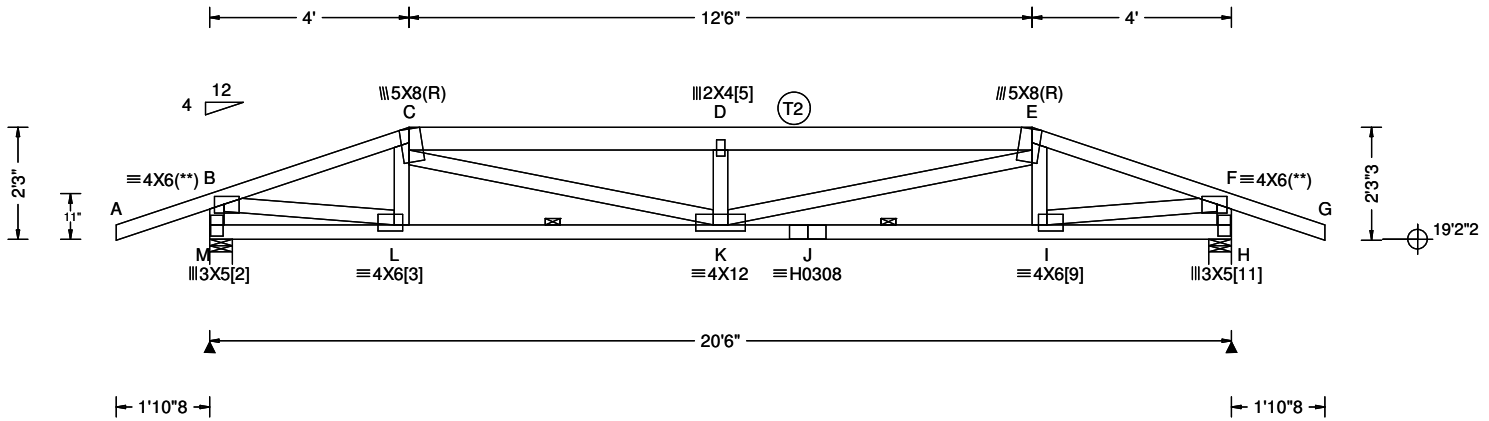


FROM: AA Qty: 1 Wood Creek (Green) revised covered deck trusses
 Wgt: 120.4 lbs TR43

DRW: ... / ... 07/18/2022



Conforms To:
 Bldg Code: NBCC 2015
 Design Criteria: Residential
 TPIC Std: TPIC 2014
 CSA Std: CSA 086-14

Loading Criteria (psf)
 TCLL: 42.25
 TCDL: 5.00
 BCLL: 0.00
 BCDL: 7.00

Wind Criteria
 q: NA
 Ref Ht: NA
 Calc'd Int. Press: NA
 Exposure: NA
 BLDG Cat: NA
 Ceiling Attached: NA
 TCDL: NA
 BCDL: NA
 Duration of Load: NA

Defl/CSI Criteria
 PP Deflection in loc L/defl L/D
 VERT(LL): 0.227 J 999 360
 VERT(TL): 0.369 J 667 360
 HORZ(LL): 0.035 C - -
 HORZ(TL): 0.057 C - 1.00
 Creep Factor: 1.0
 Overhang: Non-removable
 Max TC CSI: 0.34
 Max BC CSI: 0.41
 Max Web CSI: 0.31

▲ Bearing Locations
 Loc Ht / W / Min Req / Ctrl
 M 19'2"2 / 5"8 / 2"14 / Truss
 H 19'2"2 / 5"8 / 2"15 / Truss
 Bearings M & H are a rigid surface.

Ground Snow Load: 73.00
 Rain Load: 2.10
 Cb: 0.55
 Cs: 1.00
 Cw: 1.00
 If: 1.00
 Slippery Roof: N/A
 Wind Exposed: N/A

Des Ld: 54.25
 Lumber Duration: 1.00
 Plate Duration: 1.00
 Spacing: 24.0"
 Load Sharing: No
 PT/IT/RT: 4sx/10%/ 5 deg Standard Pressed
 Plate Type: Wave-Canada, HS-Canada

VIEW Ver: 21.02.01.1216.15

▲ Bearing Reactions (lbs)
 Loc / S / L / D / F / Hz / U
 M / 1297 / 0 / 373 / 2414 / 0 /
 H / 1301 / 0 / 374 / 2419 / 0 /

Lumber
 Top Chord: 2x4 SPF 2100Fb-1.8E;
 T2 2x6 SPF 2100Fb-1.8E;
 Chord: 2x4 SPF 2100Fb-1.8E;
 Webs: 2x4 SPF 2100Fb-1.8E;

Purlins
 In lieu of structural panels or rigid ceiling use purlins to laterally brace chords as follows:
 Chord Spacing(in oc) Start(ft) End(ft)
 BC 120 0.00 20.50
 Apply purlins to any chords above or below fillers at 24" OC unless shown otherwise above.

Maximum Top Chord Forces Per Ply (lbs)
 Chords Tens.Comp. Chords Tens. Comp.
 A - B 83 0 D - E 0 -6544
 B - C 0 -3958 E - F 0 -3969
 C - D 0 -6544 F - G 83 0

Special Loads
 Resid.Ld[3SL]- 3
 (Lumber Dur.Fac.=1.00 / Plate Dur.Fac.=1.00)
 From S/ L/ W/ D plf To S/ L/ W/ D plf
 TC: -1.87 85/ 0/ 0/10 4.06 85/ 0/ 0/10
 TC: 4.06 42/ 0/ 0/ 5 16.44 42/ 0/ 0/ 5
 TC: 16.44 85/ 0/ 0/10 22.38 85/ 0/ 0/10
 BC: 0.00 0/ 0/ 0/ 7 20.50 0/ 0/ 0/ 7
 TC: 136/0/0/26 lb Conc. Load at 4.03,16.47
 TC: 124/0/0/18 lb Conc. Load at 6.06, 8.06,10.06,10.44
 12.44,14.44
 BC: 0/0/0/29 lb Conc. Load at 2.06,18.44
 BC: 8/0/0/26 lb Conc. Load at 4.06, 6.06, 8.06,10.06
 10.44,12.44,14.44,16.44

Additional Notes
 Interaction equation as per Clause 6.5.10 of CSA-O86-14.

Maximum Bot Chord Forces Per Ply (lbs)
 Chords Tens.Comp. Chords Tens. Comp.
 M - L 0 0 J - I 3744 0
 L - K 3733 0 I - H 0 0
 K - J 3744 0

Plating Notes
 See A-100, Specification Note 7.E for standard plate positioning.
 Plates designed for fabrication using seasoned lumber.
 (**) Warning! 2 plate(s) have been repositioned by the truss designer. Special positioning required.
 Handling stresses not considered for the plates. Special care in handling of this truss is required by truss manufacturer and Installation Contractor to prevent plate damage.

Maximum Web Forces Per Ply (lbs)
 Webs Tens.Comp. Webs Tens. Comp.
 B - M 0 -2398 K - E 2924 0
 B - L 3716 0 E - I 8 -448
 L - C 8 -446 I - F 3727 0
 C - K 2935 0 F - H 0 -2403
 D - K 0 -1481

Plate Shift Table

JT No	Plate Size	Lateral Shift	Chord Bite	JT No	Plate Size	Lateral Shift	Chord Bite
[2]	3X5	S	2.75	[3]	4X6	2.00 R	1.50
[5]	2X4	S	2.50	[9]	4X6	2.00 L	1.50
[11]	3X5	S	2.75				

Loading
 Loading spec'd by auth. having jurisdiction @ time of design.



FROM: AA

Qty: 1

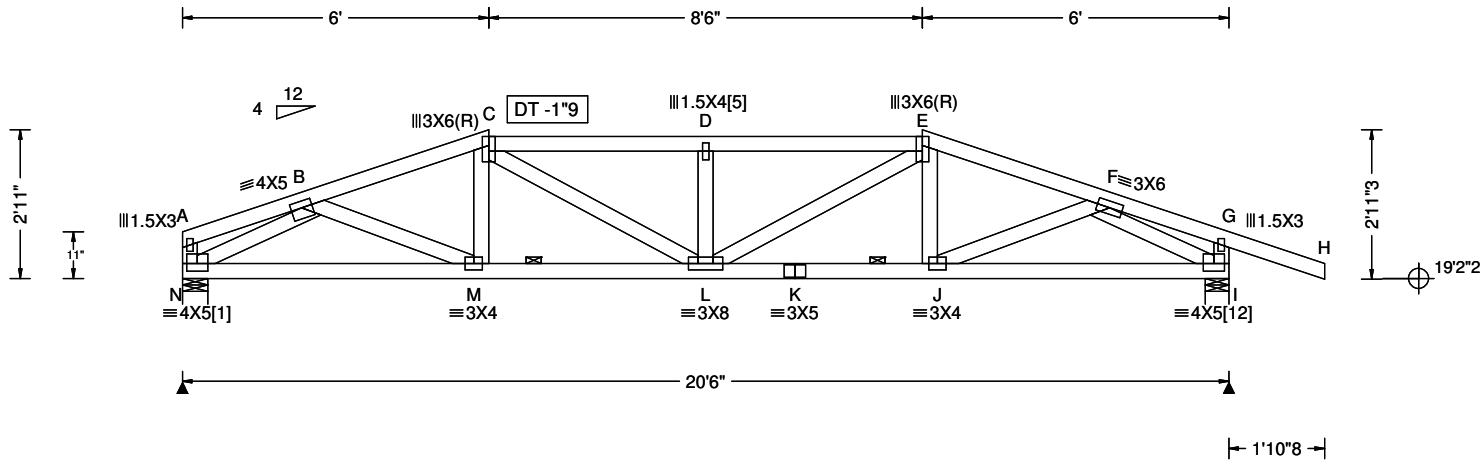
Wgt: 113.4 lbs

Wood Creek (Green) revised covered deck trusses
TR44

DRW:

... / ...

07/18/2022



Conforms To:

Bldg Code: NBCC 2015
Design Criteria: Residential
TPIC Std: TPIC 2014
CSA Std: CSA 086-14

Loading Criteria (psf)

TCLL: 42.25
TCDL: 5.00
BCLL: 0.00
BCDL: 7.00

Wind Criteria

q: NA
Ref Ht: NA
Calc'd Int. Press: NA
Exposure: NA
BLDG Cat: NA
Ceiling Attached: NA
TCDL: NA
BCDL: NA
Duration of Load: NA

Defl/CSI Criteria

PP Deflection in loc L/defl L/D
VERT(LL): 0.111 D 999 360
VERT(TL): 0.178 D 999 360
HORZ(LL): 0.035 I - -
HORZ(TL): 0.056 I - 1.00
Creep Factor: 1.0
Overhang: Non-removable
Max TC CSI: 0.23
Max BC CSI: 0.23
Max Web CSI: 0.21

Ground Snow Load: 73.00

Rain Load: 2.10
Cb: 0.55
Cs: 1.00
Cw: 1.00
If: 1.00
Slippery Roof: N/A
Wind Exposed: N/A

Des Ld: 54.25

Lumber Duration: 1.00
Plate Duration: 1.00
Spacing: 24.0"
Load Sharing: Yes

PT/IT/RT: 4sx/10%/ 5 deg Standard Pressed
Plate Type: Wave-Canada

VIEW Ver: 21.02.01.1216.15

▲ Bearing Locations

Loc	Ht	W	Min Req	Ctrl
N	19'2" / 6"	1"8	/ Truss	
I	19'2" / 5"8	1"11	/ Truss	

Bearings N & I are a rigid surface.

▲ Bearing Reactions (lbs)

Loc	/S	/L	/D	/F	/Hz	/U
N	/858	/0	/245	/1594	/0	/
I	/1031	/0	/265	/1879	/0	/

Lumber

Top Chord: 2x4 SPF 2100Fb-1.8E;
Bot Chord: 2x4 SPF 2100Fb-1.8E;
Webs: 2x4 SPF 2100Fb-1.8E;

Plating Notes

See A-100, Specification Note 7.E for standard plate positioning.

Plates designed for fabrication using seasoned lumber.

Handling stresses not considered for the plates.
Special care in handling of this truss is required by truss manufacturer and Installation Contractor to prevent plate damage.

Plate Shift Table

JT No	Plate Size	Lateral Shift	Chord Bite	JT No	Plate Size	Lateral Shift	Chord Bite
[1]	4X5	S	1.75	[5]	1.5X4	S	2.00
[12]	4X5	S	1.75				

Purlins

In lieu of structural panels or rigid ceiling use purlins to laterally brace chords as follows:

Chord	Spacing(in oc)	Start(ft)	End(ft)
BC	120	0.00	20.50

Apply purlins to any chords above or below fillers at 24" OC unless shown otherwise above.

Loading

Loading spec'd by auth. having jurisdiction @ time of design.

Additional Notes

Interaction equation as per Clause 6.5.13 of CSA-O86-14.

Maximum Top Chord Forces Per Ply (lbs)

Chords	Tens.	Comp.	Chords	Tens.	Comp.
A - B	67	-34	E - F	0	-2816
B - C	0	-2865	F - G	29	-72
C - D	0	-3363	G - H	83	0
D - E	0	-3363			

Maximum Bot Chord Forces Per Ply (lbs)

Chords	Tens.	Comp.	Chords	Tens.	Comp.
N - M	2394	0	K - J	2609	0
M - L	2648	0	J - I	2233	0
L - K	2609	0			

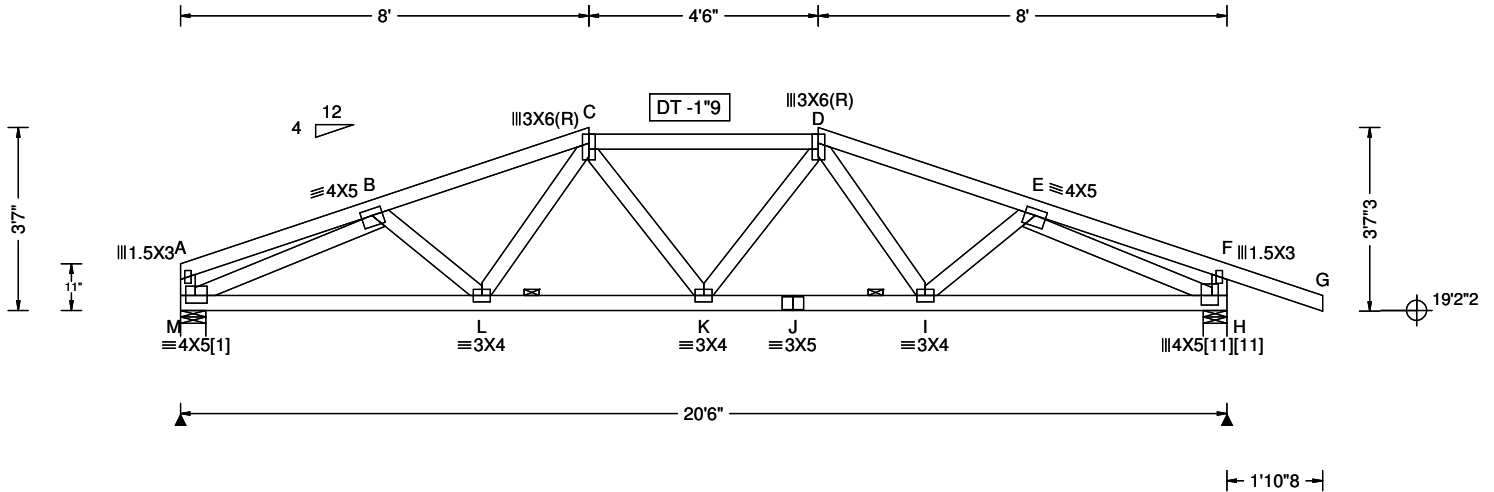
Maximum Web Forces Per Ply (lbs)

Webs	Tens.	Comp.	Webs	Tens.	Comp.
A - N	0	-106	L - E	874	0
N - B	0	-2796	E - J	66	-45
B - M	273	0	J - F	400	0
M - C	70	0	F - I	0	-2608
C - L	828	0	G - I	0	-489
D - L	0	-815			



FROM: AA Qty: 1 Wood Creek (Green) revised covered deck trusses
 Wgt: 110.6 lbs TR45

DRW: ... / ... 07/18/2022



Conforms To:
 Bldg Code: NBCC 2015
 Design Criteria: Residential
 TPIC Std: TPIC 2014
 CSA Std: CSA 086-14

Loading Criteria (psf)
 TCLL: 42.25
 TCDL: 5.00
 BCLL: 0.00
 BCDL: 7.00
 Des Ld: 54.25
 Lumber Duration: 1.00
 Plate Duration: 1.00
 Spacing: 24.0"
 Load Sharing: Yes

Wind Criteria
 q: NA
 Ref Ht: NA
 Calc'd Int. Press: NA
 Exposure: NA
 BLDG Cat: NA
 Ceiling Attached: NA
 TCDL: NA
 BCDL: NA
 Duration of Load: NA

Defl/CSI Criteria
 PP Deflection in loc L/defl L/D
 VERT(LL): 0.090 J 999 360
 VERT(TL): 0.145 J 999 360
 HORZ(LL): 0.036 H - -
 HORZ(TL): 0.058 H - 1.00
 Creep Factor: 1.0
 Overhang: Non-removable
 Max TC CSI: 0.32
 Max BC CSI: 0.26
 Max Web CSI: 0.39

▲ Bearing Locations

Loc	Ht	W	Min Req	Ctrl
M	19'2" / 6"	1"8	/ Truss	
H	19'2" / 5"8	1"11	/ Truss	

Bearings M & H are a rigid surface.

▲ Bearing Reactions (lbs)

Loc	/S	/L	/D	/F	/Hz	/U
M	/858	/0	/245	/1594	/0	/
H	/1031	/0	/265	/1879	/0	/

Ground Snow Load: 73.00
 Rain Load: 2.10
 Cb: 0.55
 Cs: 1.00
 Cw: 1.00
 If: 1.00
 Slippery Roof: N/A
 Wind Exposed: N/A

PT/IT/RT: 4sx/10%/ 5 deg Standard Pressed
 Plate Type: Wave-Canada

VIEW Ver: 21.02.01.1216.15

Lumber
 Top Chord: 2x4 SPF 2100Fb-1.8E;
 Bot Chord: 2x4 SPF 2100Fb-1.8E;
 Webs: 2x4 SPF 2100Fb-1.8E;

Plating Notes
 See A-100, Specification Note 7.E for standard plate positioning.
 Plates designed for fabrication using seasoned lumber.

Handling stresses not considered for the plates.
 Special care in handling of this truss is required by truss manufacturer and Installation Contractor to prevent plate damage.

Plate Shift Table

JT No	Plate Size	Lateral Shift	Chord Bite	JT No	Plate Size	Lateral Shift	Chord Bite
[1]	4X5	2.25	L 1.75	[11]	4X5	1.50	R 2.25

Purlins
 In lieu of structural panels or rigid ceiling use purlins to laterally brace chords as follows:
 Chord Spacing(in oc) Start(ft) End(ft)
 BC 120 0.00 20.50
 Apply purlins to any chords above or below fillers at 24" OC unless shown otherwise above.

Loading
 Loading spec'd by auth. having jurisdiction @ time of design.

Additional Notes
 Interaction equation as per Clause 6.5.13 of CSA-O86-14.

Maximum Top Chord Forces Per Ply (lbs)

Chords	Tens.	Comp.	Chords	Tens.	Comp.
A - B	101	-62	D - E	0	-2721
B - C	0	-2777	E - F	76	-87
C - D	0	-2413	F - G	83	0

Maximum Bot Chord Forces Per Ply (lbs)

Chords	Tens.	Comp.	Chords	Tens.	Comp.
M - L	2701	0	J - I	2380	0
L - K	2396	0	I - H	2590	0
K - J	2380	0			

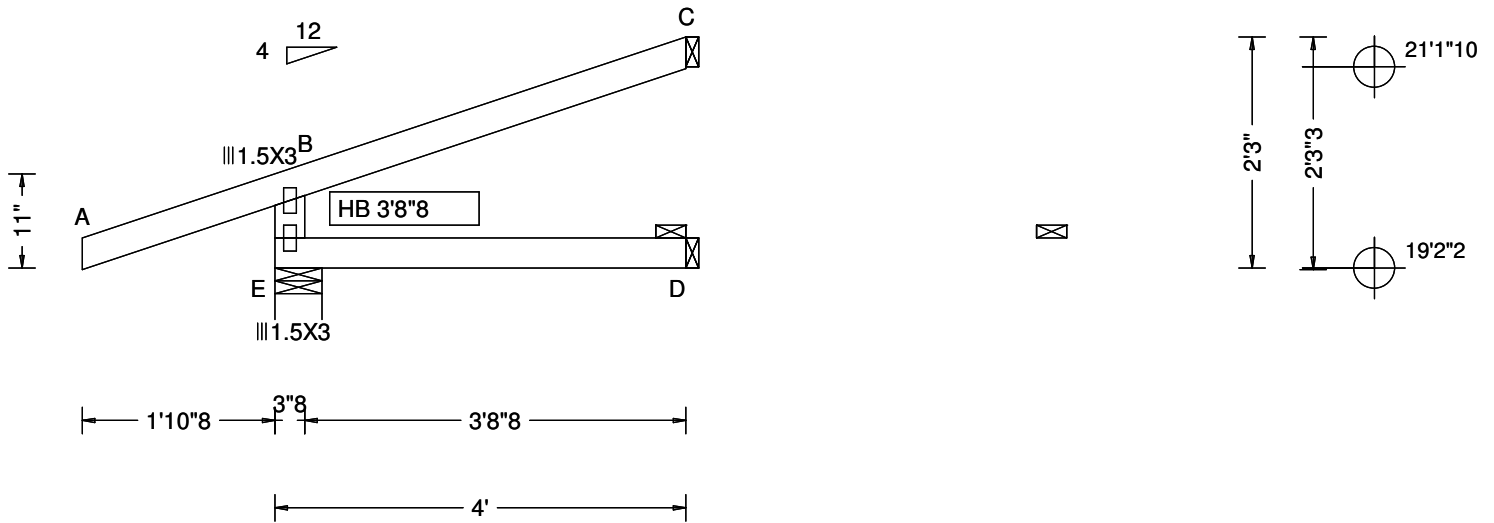
Maximum Web Forces Per Ply (lbs)

Webs	Tens.	Comp.	Webs	Tens.	Comp.
A - M	0	-197	K - D	58	0
M - B	0	-3020	D - I	210	0
B - L	39	-205	I - E	47	-125
L - C	271	0	E - H	0	-2895
C - K	39	0	F - H	0	-537



FROM: AA Qty: 8 Wood Creek (Green) revised covered deck trusses
 Wgt: 16.8 lbs TR46

DRW: ... / ... 07/18/2022



Conforms To:
 Bldg Code: NBCC 2015
 Design Criteria: Residential
 TPIC Std: TPIC 2014
 CSA Std: CSA 086-14

Loading Criteria (psf)
 TCLL: 42.25
 TCDL: 5.00
 BCLL: 0.00
 BCDL: 7.00
 Des Ld: 54.25
 Lumber Duration: 1.00
 Plate Duration: 1.00
 Spacing: 24.0"
 Load Sharing: Yes

Wind Criteria
 q: NA
 Ref Ht: NA
 Calc'd Int. Press: NA
 Exposure: NA
 BLDG Cat: NA
 Ceiling Attached: NA
 TCDL: NA
 BCDL: NA
 Duration of Load: NA

Defl/CSI Criteria
 PP Deflection in loc L/def L/D
 VERT(LL): 0.004 B 999 360
 VERT(TL): 0.006 B 999 360
 HORZ(LL): 0.008 B - -
 HORZ(TL): 0.013 B - 1.00
 Creep Factor: 1.0
 Overhang: Non-removable
 Max TC CSI: 0.30
 Max BC CSI: 0.05
 Max Web CSI: 0.11

▲ Bearing Locations

Loc	Ht	/ W	/ Min Req	/ Ctrl
E	19'2"2 / 5"8	/ 1"8	/ Truss	
D	19'2"2 / 1"8	/ -	/ -	
C	21'1"10 / 1"8	/ -	/ -	

Bearing E is a rigid surface.

▲ Bearing Reactions (lbs)

Loc	/ S	/ L	/ D	/ F	/ Hz	/ U
E	/ 364	/ 0	/ 71	/ 635	/ 0	/
D	/ 7	/ 0	/ 26	/ 43	/ 0	/
C	/ 124	/ 0	/ 17	/ 208	/ 0	/

Ground Snow Load: 73.00
 Rain Load: 2.10
 Cb: 0.55
 Cs: 1.00
 Cw: 1.00
 If: 1.00
 Slippery Roof: N/A
 Wind Exposed: N/A

PT/IT/RT: 4sx/10%/ 5 deg Standard Pressed
 Plate Type: Wave-Canada

VIEW Ver: 21.02.01.1216.15

Lumber
 Top Chord: 2x4 SPF 2100Fb-1.8E;
 Bot Chord: 2x4 SPF 2100Fb-1.8E;
 Webs: 2x4 SPF 2100Fb-1.8E;

Plating Notes
 See A-100, Specification Note 7.E for standard plate positioning.
 Plates designed for fabrication using seasoned lumber.
 Handling stresses not considered for the plates. Special care in handling of this truss is required by truss manufacturer and Installation Contractor to prevent plate damage.

Purlins
 In lieu of structural panels or rigid ceiling use purlins to laterally brace chords as follows:

Chord	Spacing(in oc)	Start(ft)	End(ft)
BC	48	0.00	4.00

 Apply purlins to any chords above or below fillers at 24" OC unless shown otherwise above.

Loading
 Loading spec'd by auth. having jurisdiction @ time of design.

Additional Notes
 Interaction equation as per Clause 6.5.13 of CSA-O86-14.
 Refer to Detail A107 for standard jack connection details and limitations.
 Warning: Component is designed to bear at specific locations.

Maximum Top Chord Forces Per Ply (lbs)

Chords	Tens.Comp.	Chords	Tens. Comp.
A - B	95	B - C	66 - 97

Maximum Bot Chord Forces Per Ply (lbs)

Chords	Tens.Comp.
E - D	0 0

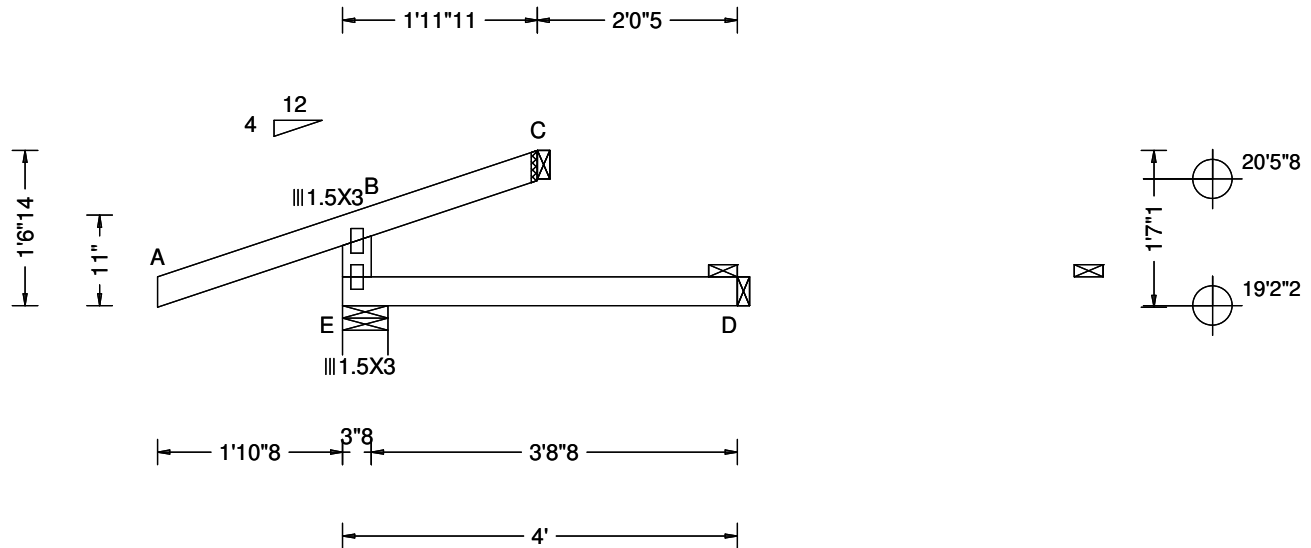
Maximum Web Forces Per Ply (lbs)

Webs	Tens.Comp.
E - B	0 - 564



FROM: AA Qty: 2 Wood Creek (Green) revised covered deck trusses
 Wgt: 14.0 lbs C06

DRW: ... / ... 07/18/2022



Conforms To:
 Bldg Code: NBCC 2015
 Design Criteria: Residential
 TPIC Std: TPIC 2014
 CSA Std: CSA 086-14

Loading Criteria (psf)
 TCLL: 42.25
 TCDL: 5.00
 BCLL: 0.00
 BCDL: 7.00
 Des Ld: 54.25
 Lumber Duration: 1.00
 Plate Duration: 1.00
 Spacing: 24.0"
 Load Sharing: No

Wind Criteria
 q: NA
 Ref Ht: NA
 Calc'd Int. Press: NA
 Exposure: NA
 BLDG Cat: NA
 Ceiling Attached: NA
 TCDL: NA
 BCDL: NA
 Duration of Load: NA

Defl/CSI Criteria
 PP Deflection in loc L/def L/D
 VERT(LL): 0.000 B 999 360
 VERT(TL): 0.001 B 999 360
 HORZ(LL): 0.001 B - -
 HORZ(TL): 0.002 B - 1.00
 Creep Factor: 1.0
 Overhang: Non-removable
 Max TC CSI: 0.33
 Max BC CSI: 0.06
 Max Web CSI: 0.18

▲ Bearing Locations

Loc	Ht	/ W	/ Min Req	/ Ctrl
E	19'2"2 / 5"8	/ 1"8	/ Truss	
C	20'5"8 / 1"8	/ -	/ -	
D	19'2"2 / 1"8	/ -	/ -	

Bearing E is a rigid surface.

▲ Bearing Reactions (lbs)

Loc	/ S	/ L	/ D	/ F	/ Hz	/ U
E	/ 315	/ 0	/ 66	/ 555	/ 0	/
C	/ 11	/ 0	/ 11	/ 31	/ 0	/
D	/ 0	/ 0	/ 29	/ 40	/ 0	/

Ground Snow Load: 73.00
 Rain Load: 2.10
 Cb: 0.55
 Cs: 1.00
 Cw: 1.00
 If: 1.00
 Slippery Roof: N/A
 Wind Exposed: N/A

PT/IT/RT: 4sx/10%/ 5 deg Standard Pressed
 Plate Type: Wave-Canada

VIEW Ver: 21.02.01.1216.15

Maximum Top Chord Forces Per Ply (lbs)

Chords	Tens.	Comp.	Chords	Tens.	Comp.
A - B	95	0	B - C	10	-64

Maximum Bot Chord Forces Per Ply (lbs)

Chords	Tens.	Comp.
E - D	0	0

Maximum Web Forces Per Ply (lbs)

Webs	Tens.	Comp.
E - B	0	-467

Lumber
 Top Chord: 2x4 SPF 2100Fb-1.8E;
 Bot Chord: 2x4 SPF 2100Fb-1.8E;
 Webs: 2x4 SPF 2100Fb-1.8E;

Special Loads
 Resid.Ld[3SL]- 4
 (Lumber Dur.Fac.=1.00 / Plate Dur.Fac.=1.00)
 From S/ L/ W/ D plf To S/ L/ W/ D plf
 TC: -1.88 85/ 0/ 0/10 1.97 85/ 0/ 0/10
 BC: 0.00 0/ 0/ 0/14 4.00 0/ 0/ 0/14
 BC: 0/0/0/12 lb Conc. Load at 2.06

Plating Notes
 See A-100, Specification Note 7.E for standard plate positioning.
 Plates designed for fabrication using seasoned lumber.
 Handling stresses not considered for the plates.
 Special care in handling of this truss is required by truss manufacturer and Installation Contractor to prevent plate damage.

Purlins
 In lieu of structural panels or rigid ceiling use purlins to laterally brace chords as follows:
 Chord Spacing(in oc) Start(ft) End(ft)
 BC 48 0.00 4.00
 Apply purlins to any chords above or below fillers at 24" OC unless shown otherwise above.

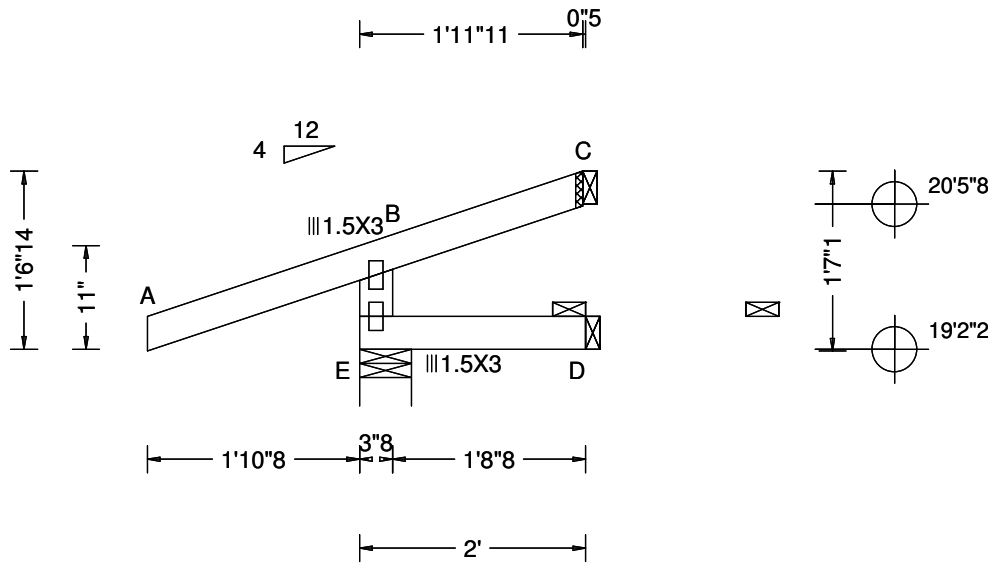
Loading
 Loading spec'd by auth. having jurisdiction @ time of design.

Additional Notes
 Interaction equation as per Clause 6.5.10 of CSA-O86-14.
 Refer to Detail A107 for standard jack connection details and limitations.
 Warning: Component is designed to bear at specific locations.



FROM: AA Qty: 2 Wgt: 11.2 lbs Wood Creek (Green) revised covered deck trusses C07

DRW: ... / ... 07/18/2022



Conforms To:
 Bldg Code: NBCC 2015
 Design Criteria: Residential
 TPIC Std: TPIC 2014
 CSA Std: CSA 086-14

Loading Criteria (psf)
 TCLL: 42.25
 TCDL: 5.00
 BCLL: 0.00
 BCDL: 7.00

Wind Criteria
 q: NA
 Ref Ht: NA
 Calc'd Int. Press: NA
 Exposure: NA
 BLDG Cat: NA
 Ceiling Attached: NA
 TCDL: NA
 BCDL: NA
 Duration of Load: NA

Defl/CSI Criteria
 PP Deflection in loc L/def L/D
 VERT(LL): 0.000 B 999 360
 VERT(TL): 0.000 B 999 360
 HORZ(LL): -0.001 C - -
 HORZ(TL): -0.001 C - 1.00
 Creep Factor: 1.0
 Overhang: Non-removable
 Max TC CSI: 0.30
 Max BC CSI: 0.02
 Max Web CSI: 0.12

▲ Bearing Locations

Loc	Ht	/ W	/ Min Req	/ Ctrl
E	19'2"2 / 5"8	/ 1"8	/ Truss	
C	20'5"8 / 1"8	/ -	/ -	
D	19'2"2 / 1"8	/ -	/ -	

Bearing E is a rigid surface.

Ground Snow Load: 73.00
 Rain Load: 2.10
 Cb: 0.55
 Cs: 1.00
 Cw: 1.00
 If: 1.00
 Slippery Roof: N/A
 Wind Exposed: N/A

Des Ld: 54.25
 Lumber Duration: 1.00
 Plate Duration: 1.00
 Spacing: 24.0"
 Load Sharing: Yes
 PT/IT/RT: 4sx/10%/ 5 deg Standard Pressed
 Plate Type: Wave-Canada

VIEW Ver: 21.02.01.1216.15

▲ Bearing Reactions (lbs)

Loc	/ S	/ L	/ D	/ F	/ Hz	/ U
E	/ 317	/ 0	/ 51	/ 539	/ 0	/
C	/ 12	/ 0	/ 2	/ 22	/ 0	/
D	/ 0	/ 0	/ 12	/ 17	/ 0	/

Lumber
 Top Chord: 2x4 SPF 2100Fb-1.8E;
 Bot Chord: 2x4 SPF 2100Fb-1.8E;
 Webs: 2x4 SPF 2100Fb-1.8E;

Plating Notes
 See A-100, Specification Note 7.E for standard plate positioning.
 Plates designed for fabrication using seasoned lumber.
 Handling stresses not considered for the plates. Special care in handling of this truss is required by truss manufacturer and Installation Contractor to prevent plate damage.

Purlins
 In lieu of structural panels or rigid ceiling use purlins to laterally brace chords as follows:
 Chord Spacing(in oc) Start(ft) End(ft)
 BC 24 0.00 2.00
 Apply purlins to any chords above or below fillers at 24" OC unless shown otherwise above.

Loading
 Loading spec'd by auth. having jurisdiction @ time of design.

Additional Notes
 Interaction equation as per Clause 6.5.13 of CSA-O86-14.
 Refer to Detail A107 for standard jack connection details and limitations.
 Warning: Component is designed to bear at specific locations.

Maximum Top Chord Forces Per Ply (lbs)

Chords	Tens.Comp.	Chords	Tens. Comp.
A - B	95	B - C	7 - 67

Maximum Bot Chord Forces Per Ply (lbs)

Chords	Tens.Comp.
E - D	0 0

Maximum Web Forces Per Ply (lbs)

Webs	Tens.Comp.
E - B	0 - 476



FROM: AA

Qty: 2

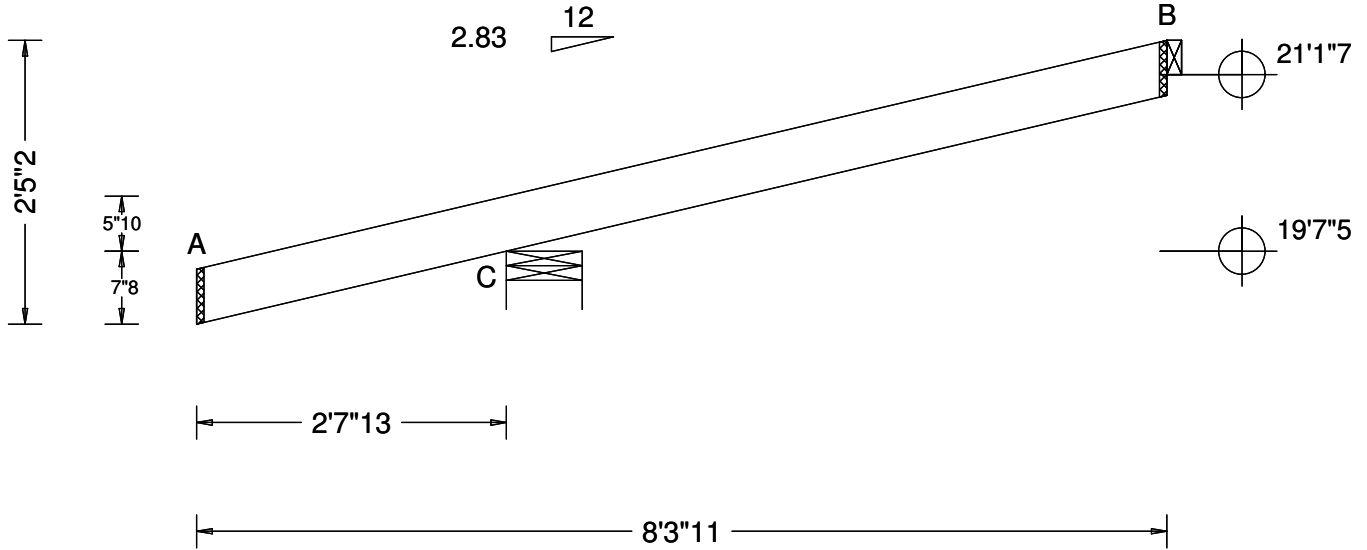
Wgt: 18.9 lbs

Wood Creek (Green) revised covered deck trusses
C08

DRW:

... / ...

07/18/2022



Conforms To:

Bldg Code: NBCC 2015
Design Criteria: Residential
TPIC Std: TPIC 2014
CSA Std: CSA 086-14

Loading Criteria (psf)

TCLL: 42.25
TCDL: 5.00
BCLL: 0.00
BCDL: 7.00
Des Ld: 54.25
Lumber Duration: 1.00
Plate Duration: 1.00
Spacing: 0.0"
Load Sharing: No

Wind Criteria

q: NA
Ref Ht: NA
Calc'd Int. Press: NA
Exposure: NA
BLDG Cat: NA
Ceiling Attached: NA
TCDL: NA
BCDL: NA
Duration of Load: NA

Defl/CSI Criteria

PP Deflection in loc L/defl L/D
VERT(LL): 0.000 - - 240
VERT(TL): 0.000 - - 360
HORZ(LL): -0.000 B - -
HORZ(TL): -0.000 B - 1.00
Creep Factor: 1.0
Overhang: Non-removable
Max TC CSI: 0.03
Max BC CSI: 0.00
Max Web CSI: 0.00

Ground Snow Load: 73.00
Rain Load: 2.10
Cb: 0.55
Cs: 1.00
Cw: 1.00
If: 1.00
Slippery Roof: N/A
Wind Exposed: N/A

PT/IT/RT: 4sx/10%/ 5 deg Standard Pressed
Plate Type:

VIEW Ver: 21.02.01.1216.15

▲ Bearing Locations

Loc	Ht	/ W	/ Min Req	/ Ctrl
C	19'7"5 / 7"12	/ 1"8	/ Truss	
B	21'1"7 / 1"8	/ -	/ -	

Bearing C is a rigid surface.

▲ Bearing Reactions (lbs)

Loc	/ S	/ L	/ D	/ F	/ Hz	/ U
C	/ 12	/ 0	/ 13	/ 35	/ 0	/
B	/ 11	/ 0	/ 8	/ 27	/ 0	/

Lumber

Top Chord: 2x6 SPF 2100Fb-1.8E;
Bot Chord: ;

Special Loads

Resid.Ld[3SL]- 3
(Lumber Dur.Fac.=1.00 / Plate Dur.Fac.=1.00)
From S/ L/ W/ D plf To S/ L/ W/ D plf
TC: -2.65 0/ 0/ 0/ 1 5.66 0/ 0/ 0/ 1
TC: 24/0/0/0 lb Conc. Load at 2.87
TC: 0/0/0/14 lb Conc. Load at 2.92

Plating Notes

See A-100, Specification Note 7.E for standard plate positioning.

Plates designed for fabrication using seasoned lumber.

Loading

Loading spec'd by auth. having jurisdiction @ time of design.

Purlins

in lieu of rigid ceiling use purlins to brace BC @ 1199998.25" oc

Additional Notes

Interaction equation as per Clause 6.5.10 of CSA-O86-14.

Refer to Detail A107 for standard jack connection details and limitations.

Shim all supports to solid bearing.

Maximum Top Chord Forces Per Ply (lbs)

Chords	Tens.Comp.
A - B	7 -7

