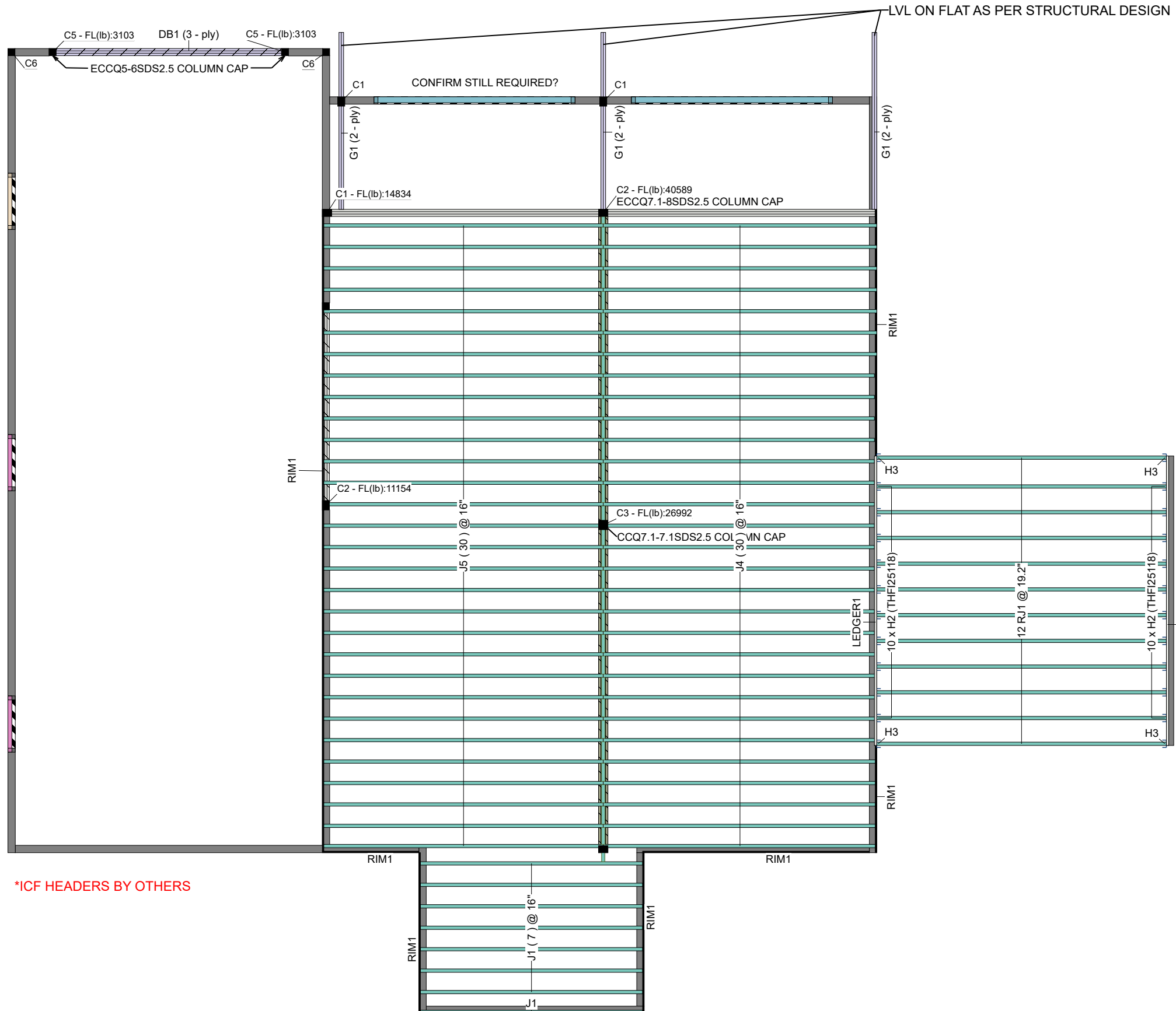


MAIN FLOOR



MAIN FLOOR

Label	Description	Width	Depth	Qty	Plies	Pcs	Length
J1	PKI20	2.5	11.875			8	14-0-0
J4	PKI20	2.5	11.875			30	17-0-0
J5	PKI20	2.5	11.875			30	18-0-0
RJ1	PKI20	2.5	11.875			12	18-0-0

Label	Description	Width	Depth	Qty	Plies	Pcs	Length
LEDGE..	2.1E Rigidlam LVL DF	1.75	11.875			1	18-0-0
LEDGE..	2.1E Rigidlam LVL DF	1.75	11.875			1	19-0-0
DB1	2.1E Rigidlam LVL DF	1.75	14	1	3	3	15-0-0
G1	2.1E Rigidlam LVL DF	1.75	14	3	2	6	11-0-0

Label	Description	Width	Depth	Qty	Plies	Pcs	Length
RIM1	LP APA Rated OSB 1.125 X 11.875	1.125	11.875			9	12-0-0

Label	Pcs	Description	Skew	Slope	fasteners	Supported Member
H2	20	THFI25118			10 10dx1 1/2	
H3	4	HD310IF				

Label	Description	Width	Depth	Qty	Plies	Pcs	Length
C5	2.1E Rigidlam LVL DF 5.25" X 5.25"	5.25	5.25			2	15
C6	2.1E Rigidlam LVL DF 5.25" X 5.25"	5.25	5.25			2	16
C2	2.1E Rigidlam LVL DF 5.25" X 7"	7	5.25			2	11
C1	2.1E Rigidlam LVL DF 5.25" X 7"	7	5.25			3	12
C3	2.1E Rigidlam LVL DF 7" X 7"	7	7			1	11

**Legend**

WS	Web Stiffener
-ws	In Hanger Label Denotes Web Stiffener
◇	Load from Above
	2x6Extlb
	Wall Opening
	LP APA Rated OSB 1.125 X 11.875
	PKI20 11.875
	2.1E Rigidlam LVL DF 1.75 X 11.875
	2.1E Rigidlam LVL DF 1.75 X 11.875 (Dropped)
	2.1E Rigidlam LVL DF 1.75 X 14 (Dropped)
	2.1E Rigidlam LVL DF 1.75 X 14 (Dropped)
	2.1E Rigidlam LVL DF 1.75 X 16 (Dropped)
	S-P-F MSR 1950 1.5 X 9.25 (Dropped)
	S-P-F #2 1.5 X 11.25 (Dropped)
	1.5 X 9.25 (Dropped)



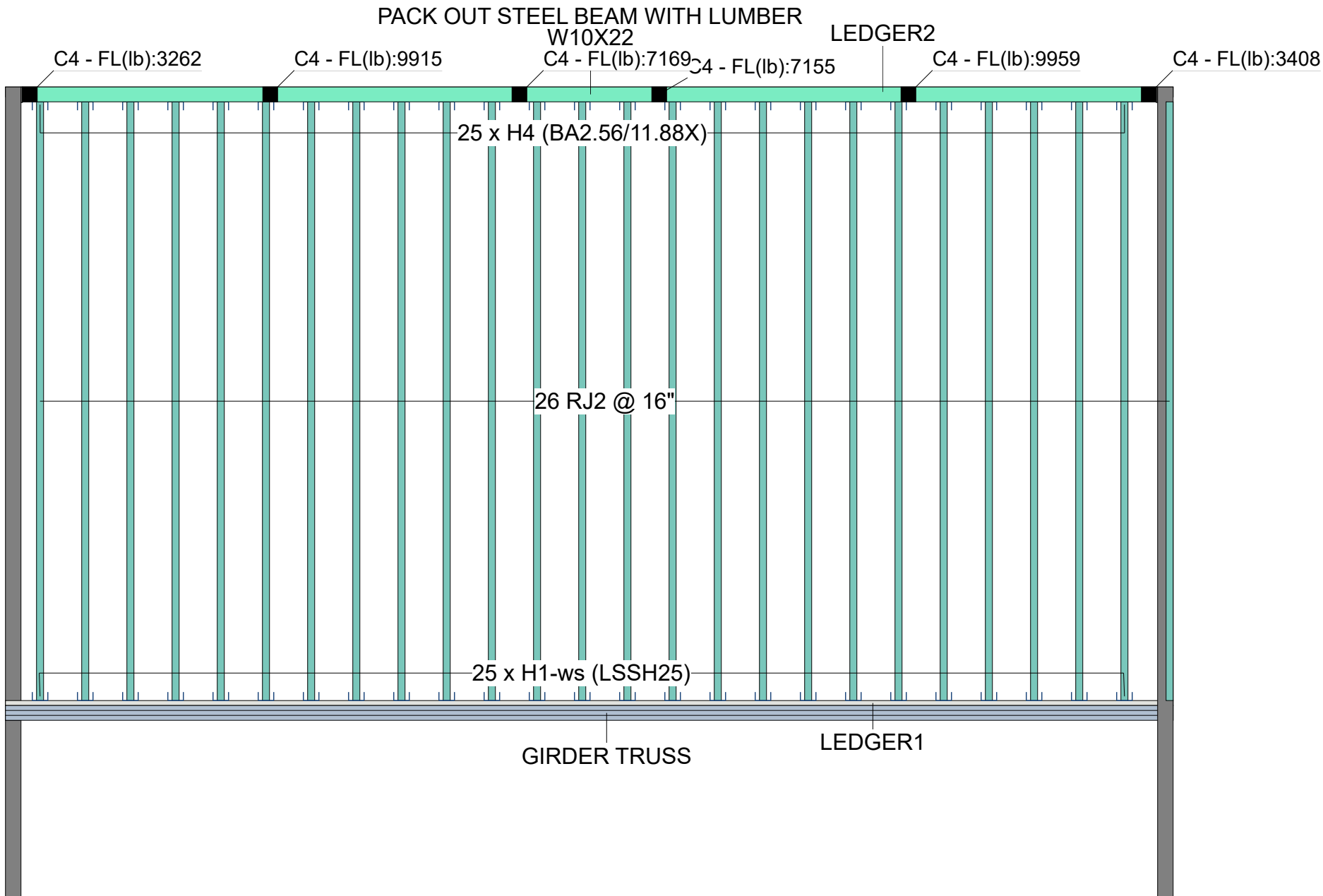
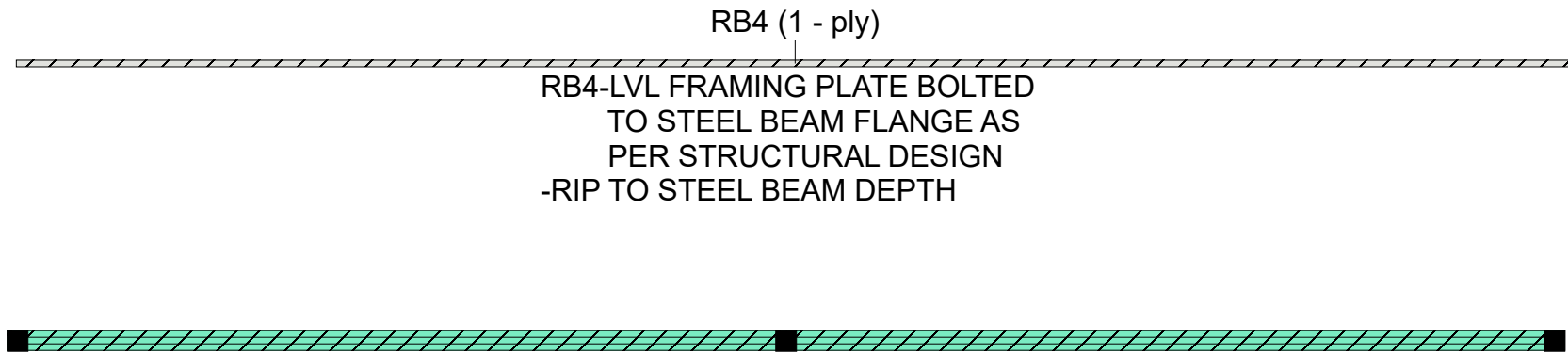
Layout Name	2202022F
Design Method	LSD
Description	
Revised	August 30, 2022
Builder	WOOD CREEK
Sales Rep	
Designer	ANNA YOUNG
Shipping	829 ARMENTIERS ROAD, SORRENTO B.C.
Project	2202022F
Builder's Project	<b>Kamloops Truss Ltd</b> 464 Chilcotin Road Kamloops BC., B.C. Canada V2H 1G3 250-374-3330

Design Method	LSD (Canada)
Building Code	NBCC 2015 / BCBC 2018

<b>Floor</b>	
Loads	
Live	40
Dead	15
Deflection Joist	
LL Span L/	360
TL Span L/	240
Deflection Flush Girder	
LL Span L/	360
TL Span L/	240
Deflection Dropped Girder	
LL Span L/	360
TL Span L/	240
Deflection Header	
LL Span L/	360
TL Span L/	240
Decking	
Decking	D. Fir Plywood
Thickness	3/4"
Fastener	Nailed & Glued
Vibration	
Ceiling:	Gypsum 1/2"

- Any lintels not shown on this layout fall under Part 9 of BCBC 2018 and are at the discretion of the builder and/or the building official.
- KTL will now supply 2x8 and 2x10 MSR lumber for beams and headers that do not pass as 2x10 #2.

ROOF LEVEL



ROOF LEVEL								
Joist								
Label	Description	Width	Depth	Qty	Plies	Pcs	Length	
RJ2	PKI20	2.5	11.875			26	19-0-0	
LVL/LSL								
Label	Description	Width	Depth	Qty	Plies	Pcs	Length	
LEDGE..	2.1E Rigidlam LVL DF	1.75	11.875			1	35-0-0	
LEDGE..	2.1E Rigidlam LVL DF	1.75	11.875	1	2	2	35-0-0	
RB4	2.1E Rigidlam LVL DF	1.75	11.875			1	35-0-0	
Hanger								
						Beam/Girder	Supported Member	
Label	Pcs	Description	Skew	Slope	fasteners	fasteners		
H1	25	LSSH25	Var	Var	14 16d	12 10dx1 1/2		
H4	25	BA2.56/11.88X	Var	Var				
Column Legend								
Label	Description	Web	Width	Depth	Qty	Plies	Pcs	Length
C4	2.1E Rigidlam LVL DF	5.25" X 5.25" Stiffener	5.25	5.25			6	14

Symbol	Description
◊	Load from Above
▨	2x6Extlb
▩	Wall Opening
▧	PKI20 11.875
▦	2.1E Rigidlam LVL DF 1.75 X 11.875
▥	2.1E Rigidlam LVL DF 1.75 X 11.875 (Dropped)
▤	1.5 X 9.25 (Dropped)
▣	1.75 X 11.875 (Dropped)
▢	1.75 X 24
□	5.25 X 11.875



<b>Layout Name</b>	2202022F
<b>Design Method</b>	LSD
<b>Description</b>	
<b>Revised</b>	August 30, 2022
<b>Builder</b>	WOOD CREEK
<b>Sales Rep</b>	
<b>Designer</b>	ANNA YOUNG
<b>Shipping</b>	829 ARMENTIERS ROAD, SORRENTO B.C.
<b>Project</b>	2202022F
<b>Builder's Project</b>	
<b>Kamloops Truss Ltd</b>	464 Chilcotin Road Kamloops BC., B.C. Canada V2H 1G3 250-374-3330

ROOF LEVEL	
Design Method	LSD (Canada)
Building Code	NBCC 2015 / BCBC 2018
<b>Roof</b>	
Loads	
Live	0
Dead	15
Snow	42.3
Deflection Joist	
LL Span L/	360
TL Span L/	240
Deflection Flush Girder	
LL Span L/	360
TL Span L/	240
Deflection Dropped Girder	
LL Span L/	360
TL Span L/	240
Deflection Header	
LL Span L/	360
TL Span L/	240

- Any lintels not shown on this layout fall under Part 9 of BCBC 2018 and are at the discretion of the builder and/or the building official.
- KTL will now supply 2x8 and 2x10 MSR lumber for beams and headers that do not pass as 2x10 #2.