



PUBLIC WORKS, UTILITIES & PARKS
100-30 STREET SE
PO BOX 40 SALMON ARM, BC V1E 4N2
Phone: 250-803-4080 FAX 250-803-4092

EMAIL NOTICE

To: marc@woodcreek.ca
Company: Wood Creek Construction
Of Pages: 4 (Including this one)
FROM: Salmon Arm Public Works/Utilities/Parks Department

MESSAGE:

BYDP TICKET #20223510820

SERVICE LOCATION REQUEST: 1490 21 STREET NE

THIS MESSAGE IS INTENDED ONLY FOR THE USE OF THE ADDRESSEE AND MIGHT CONTAIN INFORMATION THAT IS PRIVILEGED, CONFIDENTIAL, AND EXEMPT FROM DISCLOSURE. If the reader of this message is not the intended recipient or an employee of the agent responsible for delivering the message to the intended recipient, you are hereby notified that any dissemination, distribution, or copying of the communication is strictly prohibited. If you have received this communication in error, please notify us immediately by telephone and return the original message to us by mail. Thank you.

UTILITY RECORD

SUBDIVISION/ADDRESS	LEGAL DESCRIPTION	
SUBDIVISION: JOY ACRES – PHASE 2 ADDRESS: 1490 21 STREET NE, SALMON ARM	LOT: 17 PLAN: EPP118796 SEC: 24	
WATER CONNECTION	STORM CONNECTION	
DATE INSTALLED: MARCH 2022 INSTALLED BY: EDL CONSTRUCTION SIZE: 25mm MATERIAL: PEX A * INV. ELEVATION: 429.60 LOCATION: CURB STOP IS 4.2m NORTH OF SOUTH PROPERTY LINE AND 0.3m WEST OF WEST PROPERTY LINE *GEODETTIC ELEVATION	DATE INSTALLED: MARCH 2022 INSTALLED BY: EDL CONSTRUCTION SIZE: 150mm MATERIAL: SDR28 PVC * INV. ELEVATION: 430.63 LOCATION: CLEAN OUT IS 3.2m NORTH OF SOUTH PROPERTY LINE AND 0.3m WEST OF WEST PROPERTY LINE *GEODETTIC ELEVATION	
SANITARY CONNECTION	NOTES	
DATE INSTALLED: MARCH 2022 INSTALLED BY: EDL CONSTRUCTION SIZE: 100mm MATERIAL: SDR28 PVC * INV. ELEVATION: 428.70 LOCATION: CLEAN OUT IS 2.0m NORTH OF SOUTH PROPERTY LINE AND 0.3m WEST OF WEST PROPERTY LINE *GEODETTIC ELEVATION	<div style="text-align: center;"> </div>	

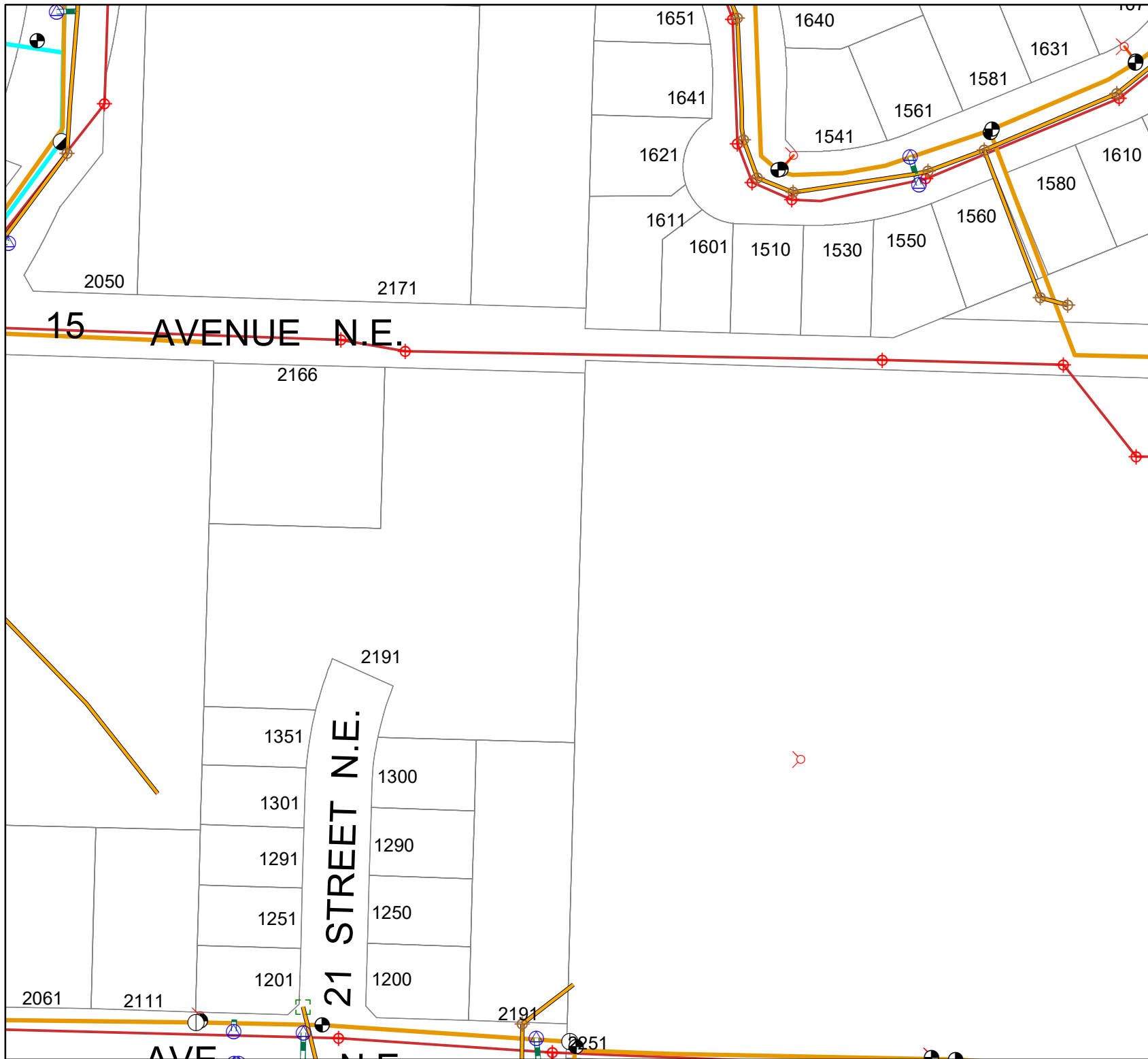
*MBE – MINIMUM BASEMENT ELEVATION
 LOT GRADE (GEODETTIC)
 DIRECTION OF SURFACE RUNOFF

Scale: 1:400

NOTE: THE INFORMATION CONTAINED HEREIN IS FOR INTERNAL USE ONLY
 AND IS NOT TO BE RELIED UPON UNLESS CONFIRMED BY SITE
 INSPECTION AND/OR INVESTIGATION.



1:1,390

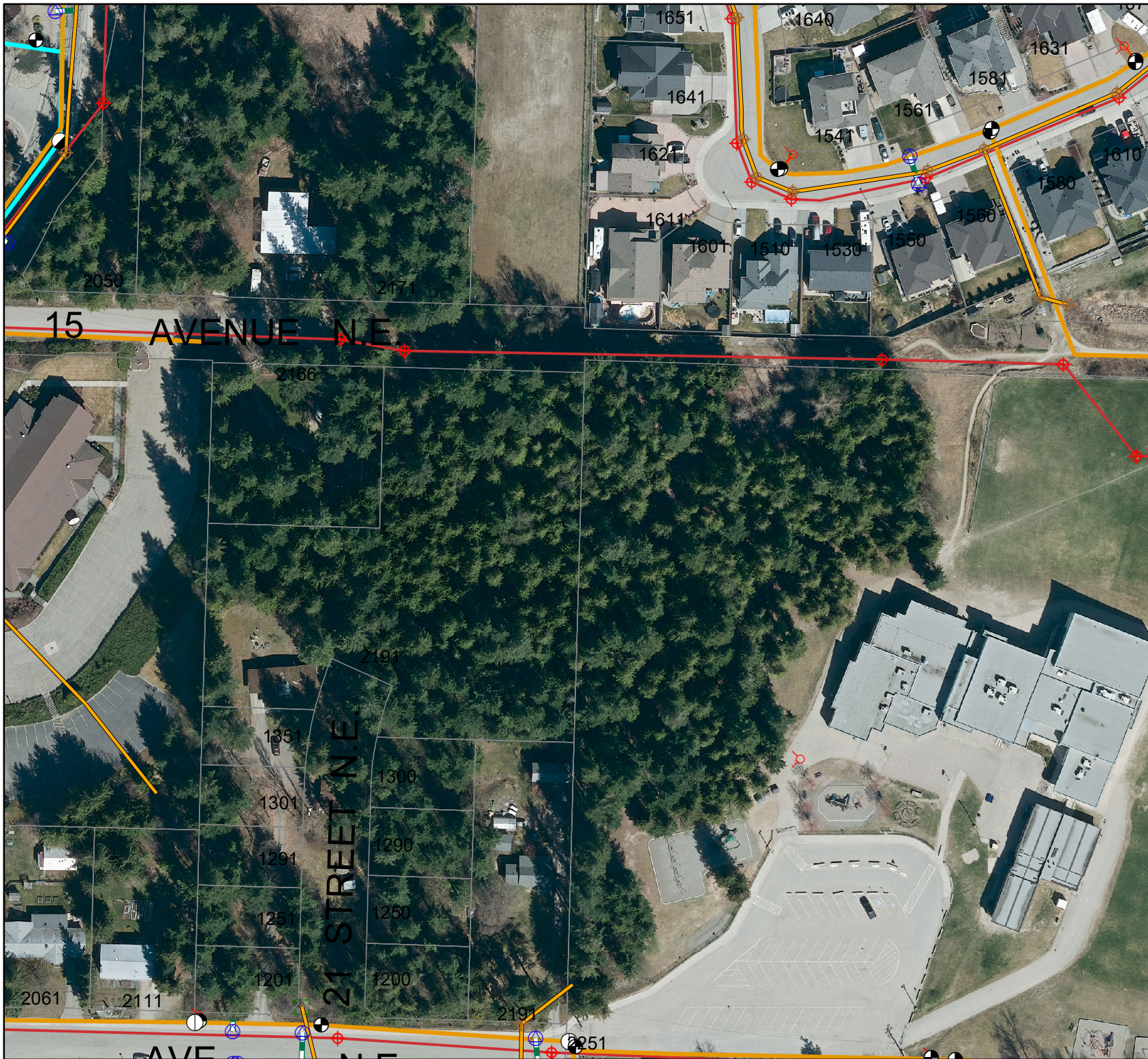


Legend

- Storm End Cap
- Storm Manhole
- Storm Catch Basin
- Catchbasin Lead
- Gravity
- Perforated Drain
- Air Release
- Blow Off
- Butterfly
- Check
- Curb Stop
- Drain
- Gate
- Normally Closed
- Pressure Reducing
- Water Hydrant
- Water Hydrant Lead
- Water Pressure Zone 1
- Water Pressure Zone 2
- Water Pressure Zone 3
- Water Pressure Zone 3A
- Water Pressure Zone 4
- Water Pressure Zone 5
- Sani_Manholes
- Force Pipe
- Gravity Pipe
- Parcels
- Parcels



1:1,390



Legend

- Storm End Cap
- Storm Manhole
- Storm Catch Basin
- Catchbasin Lead
- Gravity
- Perforated Drain
- Air Release
- Blow Off
- Butterfly
- Check
- Curb Stop
- Drain
- Gate
- Normally Closed
- Pressure Reducing
- Water Hydrant
- Water Hydrant Lead
- Water Pressure Zone 1
- Water Pressure Zone 2
- Water Pressure Zone 3
- Water Pressure Zone 3A
- Water Pressure Zone 4
- Water Pressure Zone 5
- Sani_Manholes
- Force Pipe
- Gravity Pipe
- Parcels
- Parcels

Orthos 2021 - 10cm

RGB

- Red: Band_1
- Green: Band_2
- Blue: Band_3