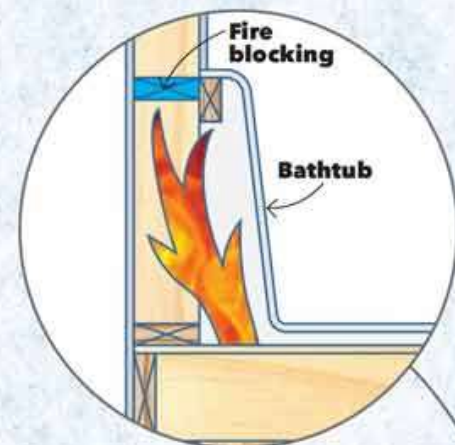
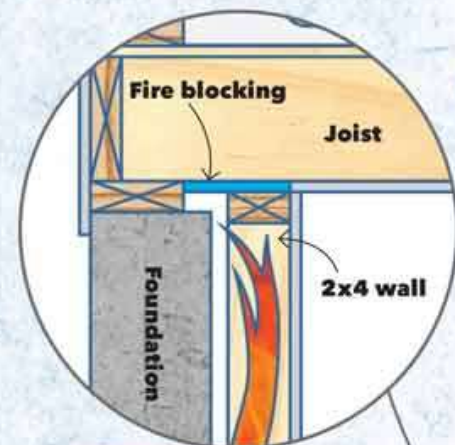


## Figure A Whole-House Fire Blocking



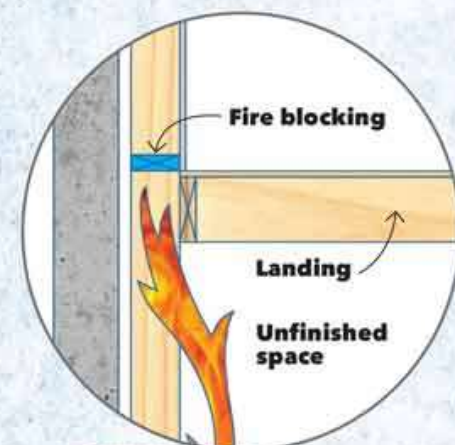
### DROP-IN TUBS

If the wall behind a drop-in bathtub is finished, no blocking is required. If the wall isn't finished, install 2-by material between the studs, flush with the top of the tub. Insulation batting in the wall extending at least 16 in. above the tub is also sufficient.



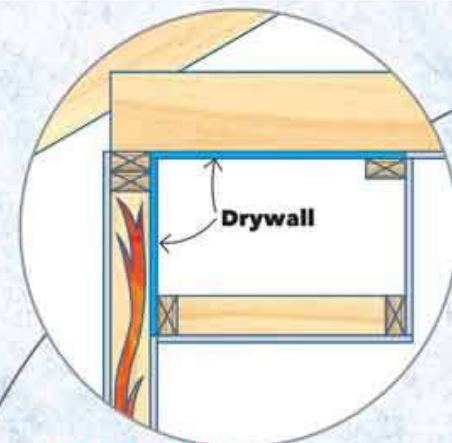
### BASEMENT WALLS

The gap behind a 2x4 wall has to be sealed off from the joist bays above the wall.



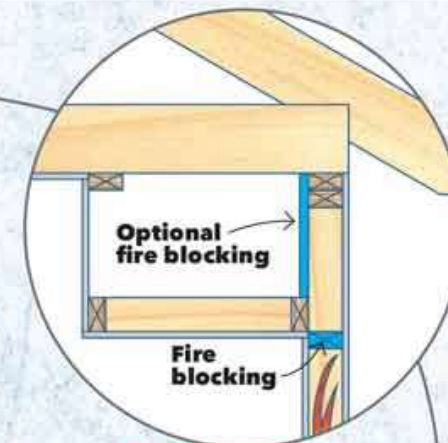
### LANDING

Install blocking in stud cavities above a landing over an unfinished space.



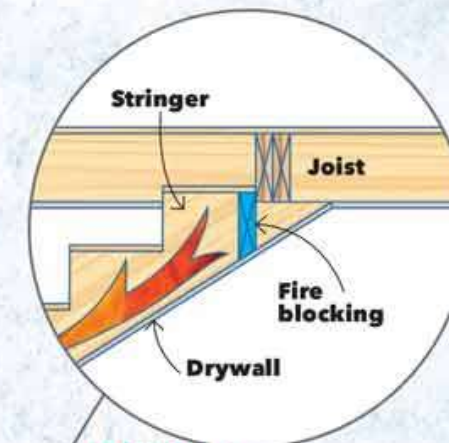
### SOFFIT WITH A FINISHED BACK

If the wall and ceiling were drywalled before the soffit was put in, no further fire blocking is needed.



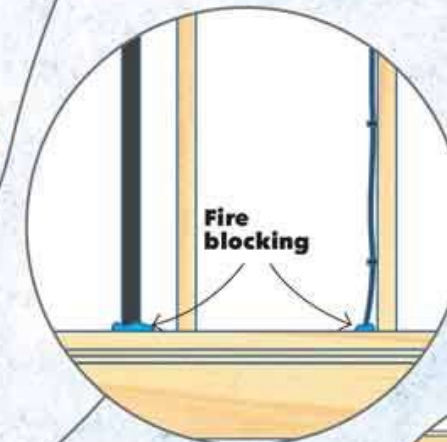
### SOFFIT WITH AN UNFINISHED BACK

Block off the stud bays at the base of the soffit with 2-by material. Or install 2-by blocking or approved sheathing along the back of the soffit.



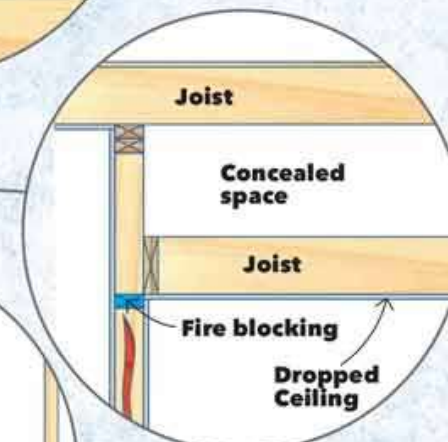
### STRINGERS

Install 2-by blocking between stair stringers to prevent fire from entering the joist bays. Cover the underside of stair stringers with drywall.



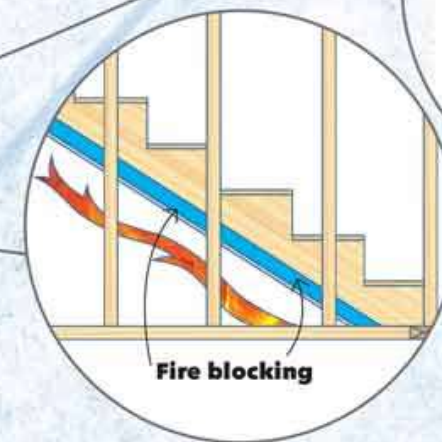
### PLUMBING AND ELECTRICAL

Where plumbing pipes or electric cables pass through wall plates, fill any resulting gaps with an approved fire-blocking material.



### CONCEALED SPACES

A dropped ceiling needs fire blocking where the joists meet the wall.



### STAIRS ABOVE UNFINISHED SPACE

Angle-cut 2-by fire blocking to fit between the studs on the outside of the stair stringers.

### MEET THE EXPERT



Don Sivigny, with decades of experience as a construction manager, contractor, inspector and code educator, has seen his fair share of framing errors and code violations.



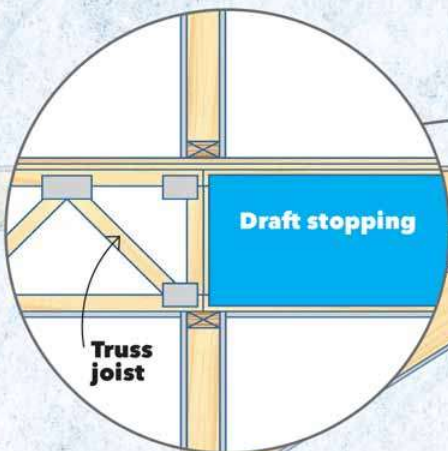
## Materials for draft stopping

Draft stopping prevents the horizontal movement of smoke and gases by limiting concealed spaces to 1,000 sq. ft. or less.

- Minimum 1/2-in. drywall.
- Minimum 3/8-in. structural panels such as plywood or oriented strand board (OSB).

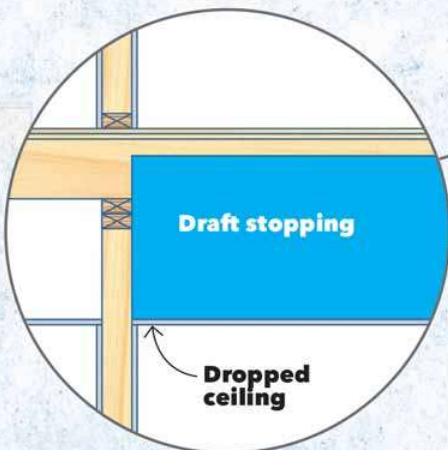
### FLOOR JOISTS

If ceiling finish material is attached directly to the joists, no further draft stopping is necessary, as the joist bays are likely less than 1,000 sq. ft.



### TRUSS-STYLE JOISTS

If ceiling finish material is applied to truss-style joists, apply draft-stopping material to cover only enough trusses to limit unfinished concealed spaces to less than 1,000 sq. ft.

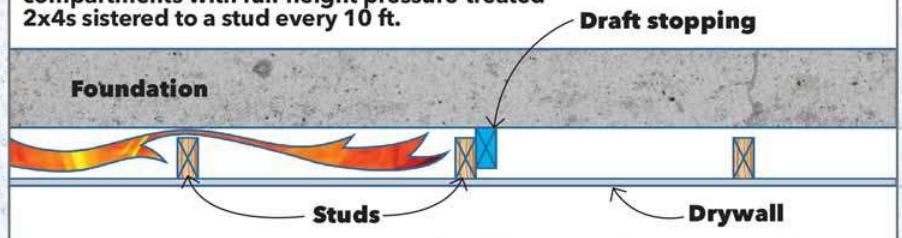


### DROPPED CEILING

Install draft-stopping material to limit unfinished concealed spaces to less than 1,000 sq. ft.

### FINISHED BASEMENT

Break up the space behind the studs into smaller compartments with full-height pressure-treated 2x4s sistered to a stud every 10 ft.



Foundation wall shown in cross section from above.